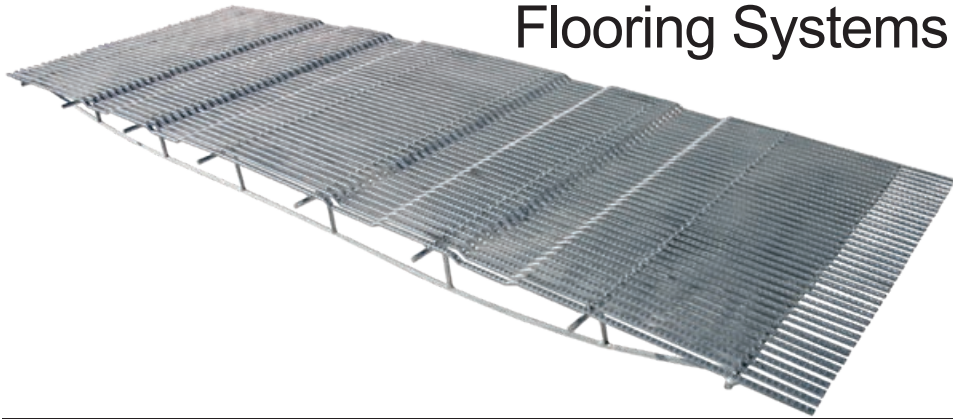




TRIDEK

Flooring Systems



INSTALLATION AND INFORMATION MANUAL

Introducing a galvanized triangular bar (TriDEK) flooring system that is used in nursery and farrowing applications. TriDEK floors are made from rolled Steel rod which has a tensile strength of 80,000 psi and hardness of 95 Rb. The rolled TriDEK rods are then resistance welded to a 13/32" dia cross rod.

Hog Slat is the only Hog equipment manufacturer to offer resistance welded TriDEK floors.

The advantages of resistance welding versus Mig welding are:

- Weld consistency
- Weld strength
- Floor cleanliness.

Resistance welded TriDEK floors have an average weld strength of 7500+ lbs where traditional MIG welded floors average 5500 lbs. The TriDEK flooring system is the cleanest flooring system on the market today.

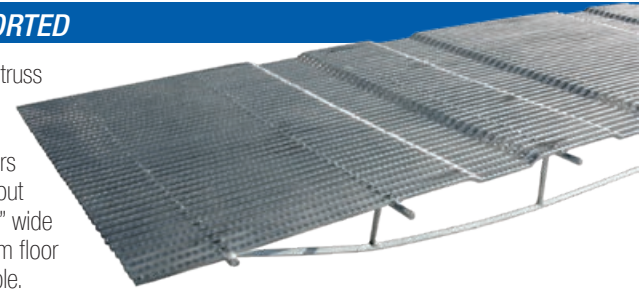
TriDEK floors can be manufactured up to 2.5' wide and up to 14' long.

TriDEK floors are Hot Dipped galvanized to ASTM A123/A. Hot Dipped Galvanizing provides steel with long lasting protection against corrosion. Some of the possible options for the TriDEK flooring include, smooth or dimpled surface (No-Slip) to provide your preferred level of traction and a standard flat deck or optional traction breaks.

All together, the new TriDEK flooring system provides the best value on the market!

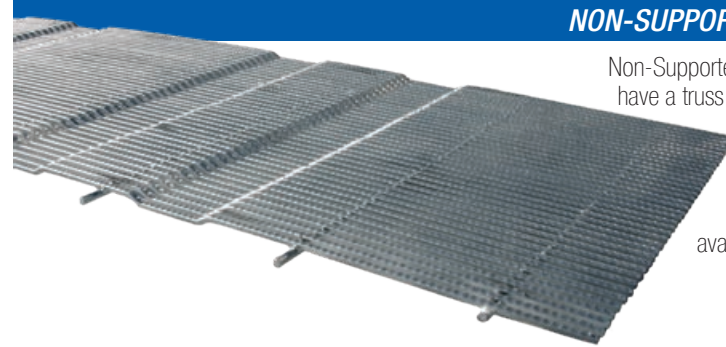
SELF-SUPPORTED

Self-Supported TriDEK floors have a truss system that eliminates the need for floor frames or other support methods. TriDEK self-supported floors can be used to span up to 14' with out additional support. The standard 30" wide floor has 4 truss supports, but custom floor widths and truss supports are available.

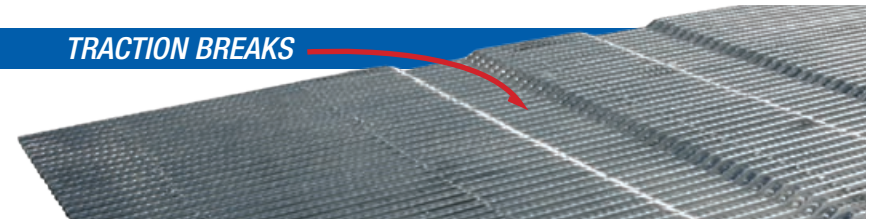


NON-SUPPORTED

Non-Supported TriDEK flooring does not have a truss system in place to support the flooring structure. Non-Supported TriDEK requires support beams or frames. Same options are available as the self supported TriDEK model.



TRACTION BREAKS



5" wide x 3/8" deep indentions in the flooring help support the sow during standing and sitting. Traction breaks reduce slippage and possible injury to the sow. TriDEK may be ordered with or without traction breaks installed. *Traction Breaks are not used in nursery applications.



NO-SLIP GRIP INDENTIONS

.5"x .025" indentions spaced every 5/16" on the TriDEK flooring provide additional traction to support sow footing. No-Slip is primarily used in farrowing rooms. No-Slip is optional.

SPECIFICATIONS

Triangular Dimensions:

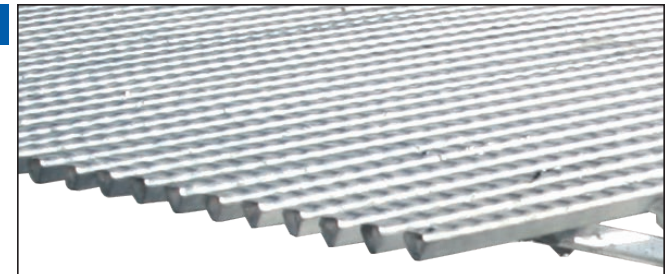
1/3" x 1/3" x 1/3"

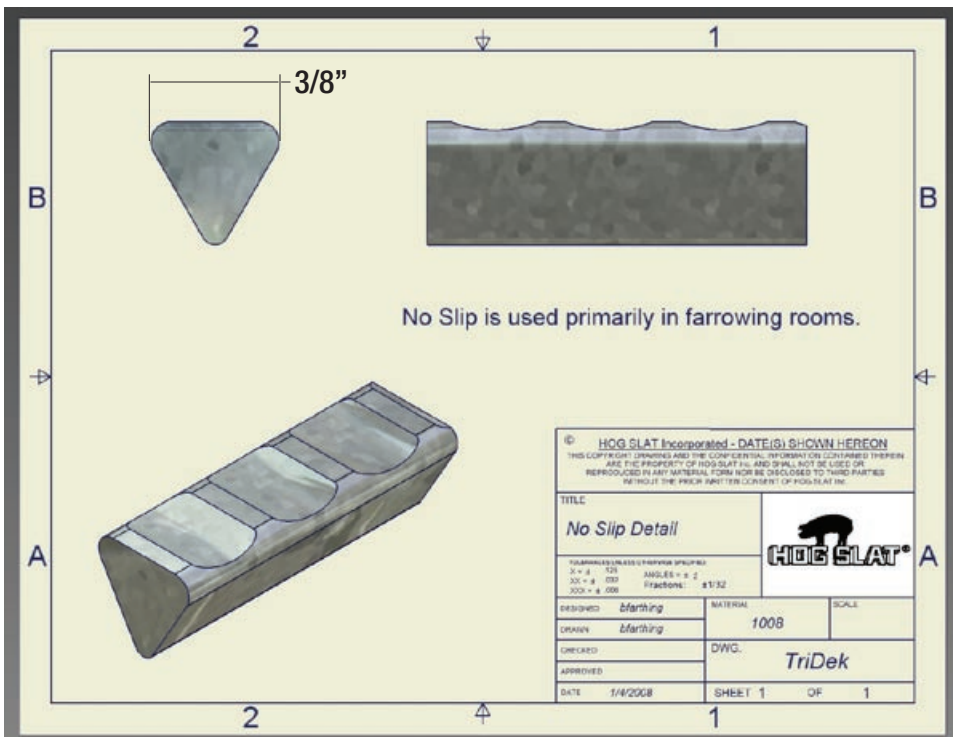
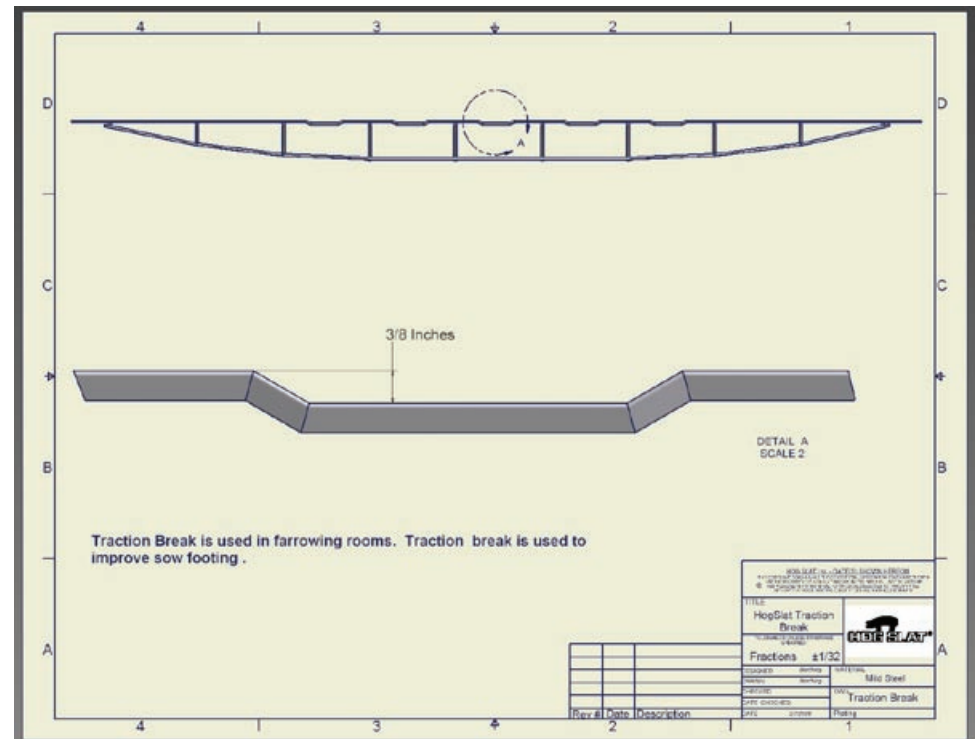
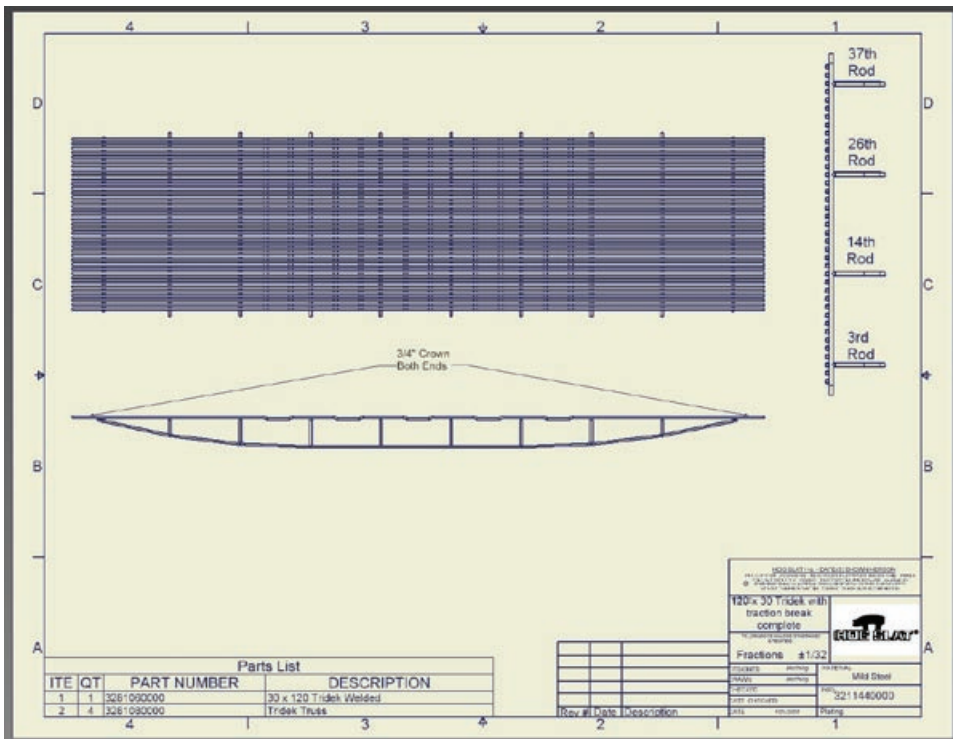
Opening Spacing:

3/8"

Finish:

Hot dipped galvanized
(ASTM A123/A)





Resistance Welding

All TriDEK frames are resistance welded at Hog Slat, Inc.'s manufacturing plant before any trusses or additional features are added. The Resistance welding process involves high current at low voltage under pressure. The interface of the cross rod and the TriDEK rods becomes molten and are then under controlled time, current and pressure welded together. The result is a very strong consistent weld. The average strength of each resistance weld is 7500+ lbs. Traditional MIG welded floors have an average strength of 5500 lbs.

Installation

1. Begin by removing old flooring, feeders, and other equipment.
2. Mount 3/16" x 2" x 2" x 10' TriDEK Angle Support (3060100200) to legs with 3/8" x 1" Bolt (60515) and 3/8" Locknut (60682). (See list of optional legs.) 4 legs per 10'.
3. Mount a 3/16" x 2" x 2" x 10' TriDEK Angle Support (3060100200) on the wall to match with the galvanized Angle Support mounted on the walkway. Use 3/8" x 2 3/4" Concrete Anchors (60655) if mounting to concrete wall and 3/8" Bolts or Lag Bolts if mounting wood studded wall.
4. Place new TriDEK flooring on top of the newly installed galvanized Angle Support.
5. Bolt new TriDEK flooring to galvanized brackets with galvanized washers (3/8"x1 1/2"), nuts (3/8" locknut), and bolts (3/8"x1 1/2").
6. Repeat until the pen is complete from one end to the other.
7. Reinstall feeders, gates, and other equipment on top of the new TriDEK flooring.

*Note: For applications that do not require support trusses, due to the availability of a floor mounting structure, it might be a good idea to check your floor beams or frames for stability. If need to, replace before installing your new TriDEK flooring system to avoid potential problems in the future.

*For some applications with the TriDEK Cast the Galvanized Angle Bracket will already be attached to the flooring system. Just set in place and anchor with 3/8" x 2 3/4" wedge anchors (60655).

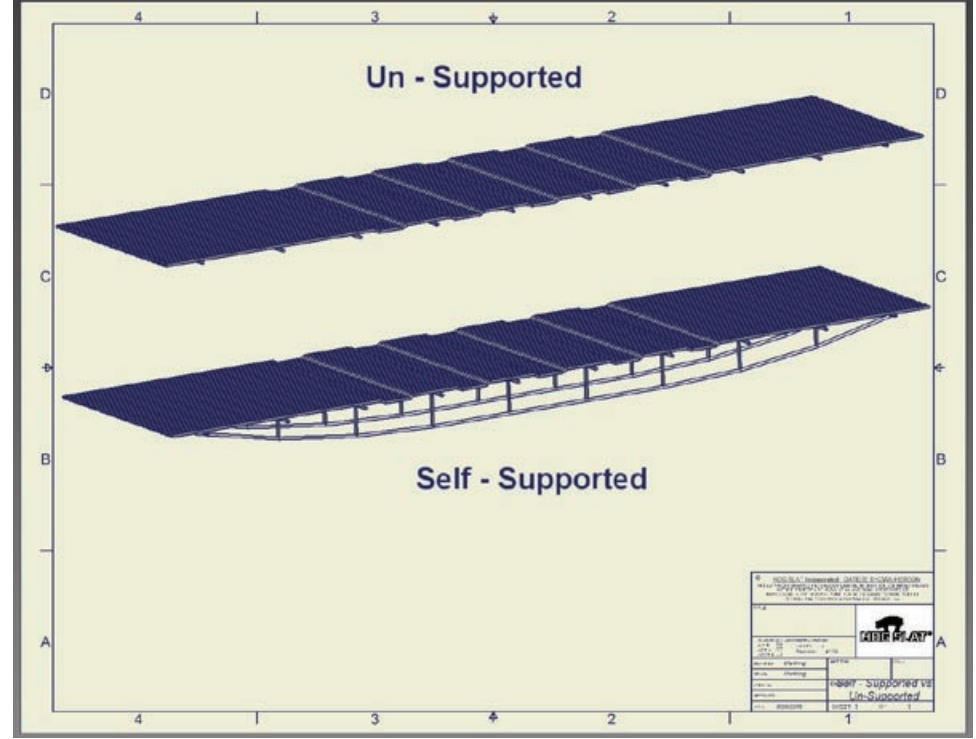
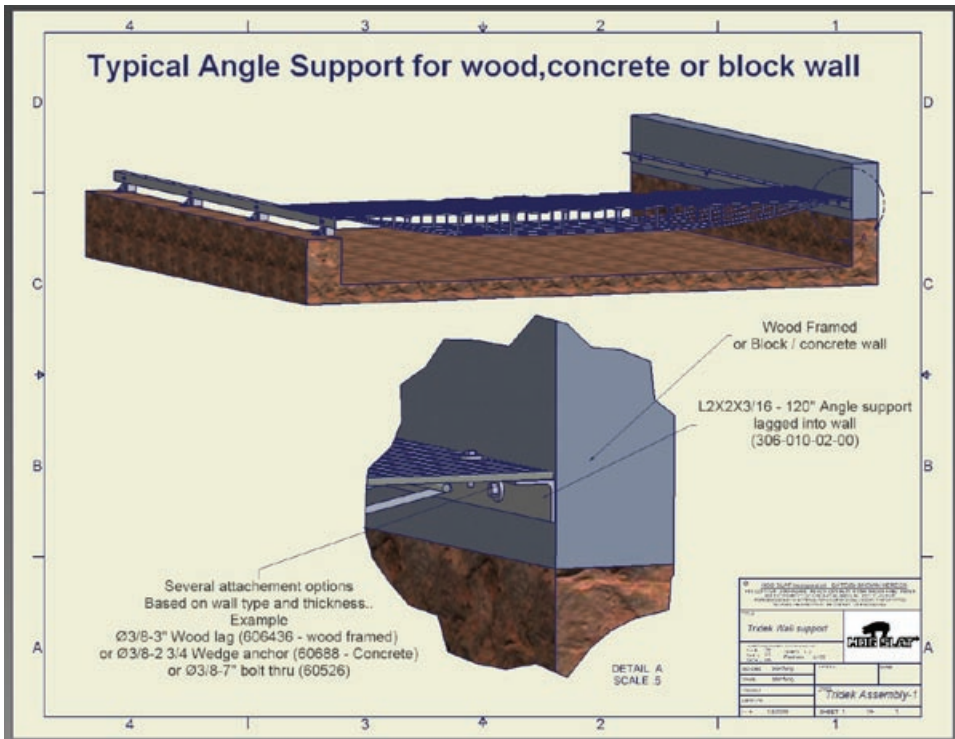
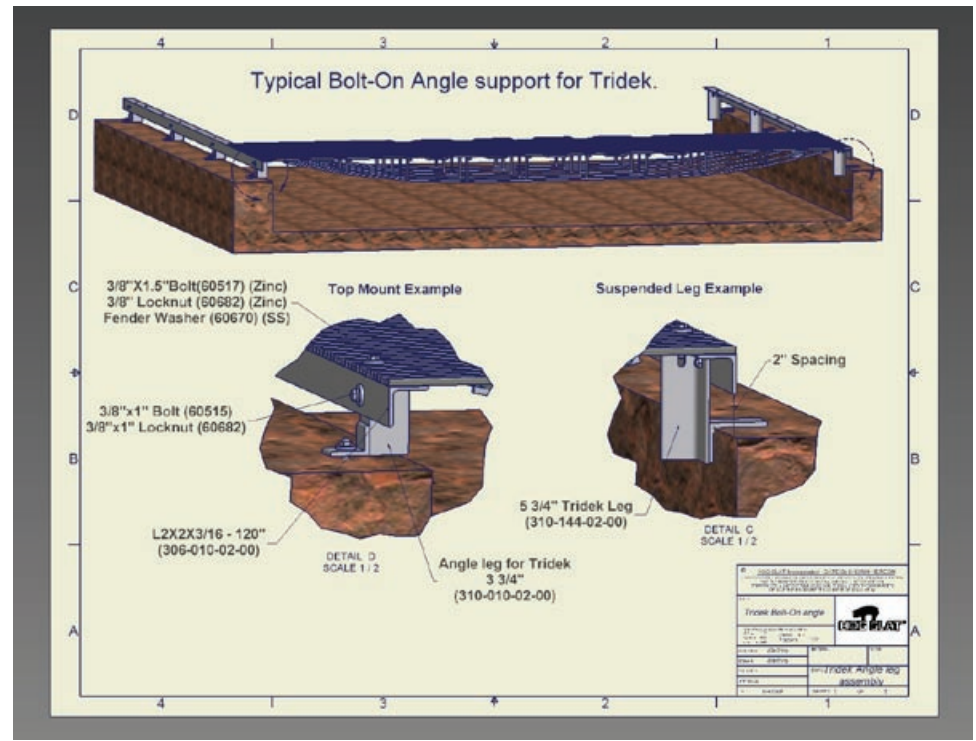
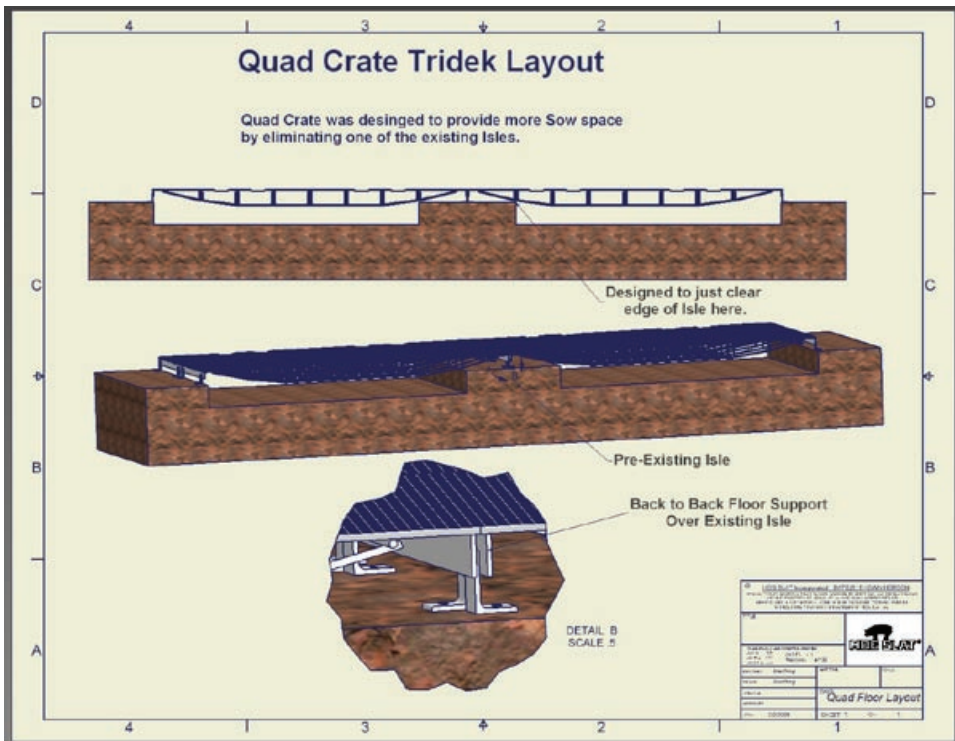
Cast/TriDEK

- 18"x 7': Part # 3211920200 (Self Supported, smooth TriDEK with Flat bar & legs for cast iron)
- 18"x 7': Part # 3211920201 (Self Supported, No-Slip TriDEK with Flat bar & legs for cast iron)
- 18"x 7'6": Part # 3280910200 (Self Supported, smooth TriDEK with Flat bar & legs for cast iron)
- 18"x 7'6": Part # 3280910201 (Self Supported, No-Slip TriDEK with Flat bar & legs for cast iron)
- 21"x 7': Part # 3280930200 (Self Supported, smooth TriDEK with Flat bar & legs for cast iron)
- 21"x 7': Part # 3280930201 (Self Supported, No-Slip TriDEK with Flat bar & legs for cast iron)
- 21"x 7'6": Part # 3280100200 (Self Supported, smooth TriDEK with Flat bar & legs for cast iron)
- 21"x 7'6": Part # 3280100201 (Self Supported, No-Slip TriDEK with Flat bar & legs for cast iron)
- 24"x42" Flat cast iron, black (overlay) - Part # HS24x42
- 24"x48" Flat cast iron, black (overlay) - Part # HS24x48

-The truss is welded closer together on the side that the cast is supported on, than on the creep side.
-Tabs are welded on the end of the TriDEK floor where the casts sits to keep the cast from sliding off into the walkway.

-Flat bar is weld across the bottom of the ends with angle legs onto the flat bar to support the TriDEK.

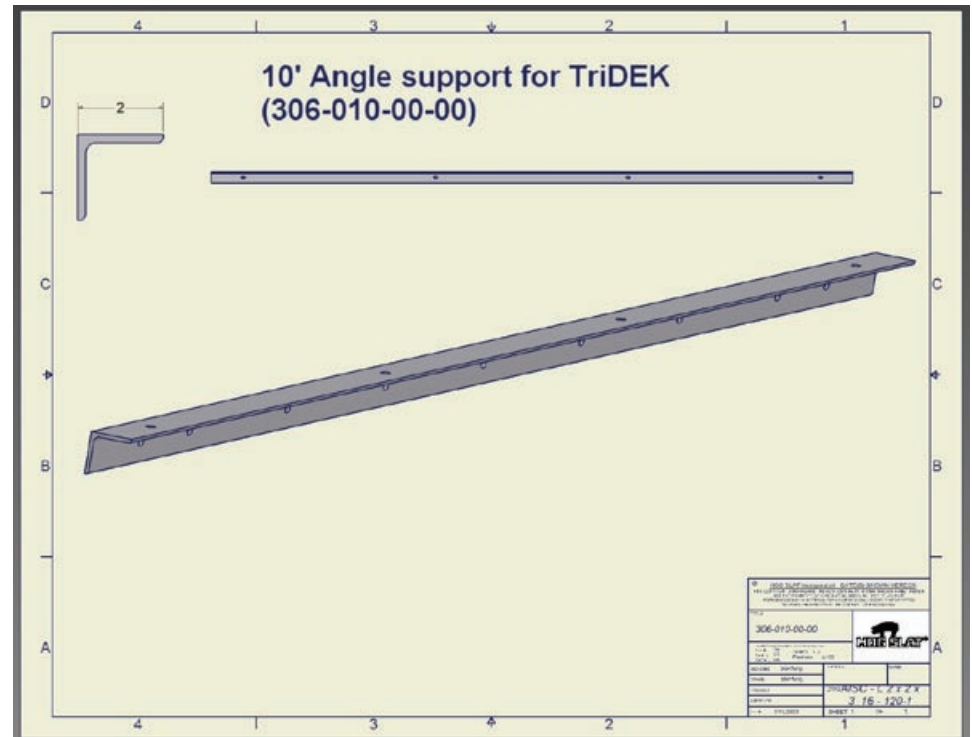
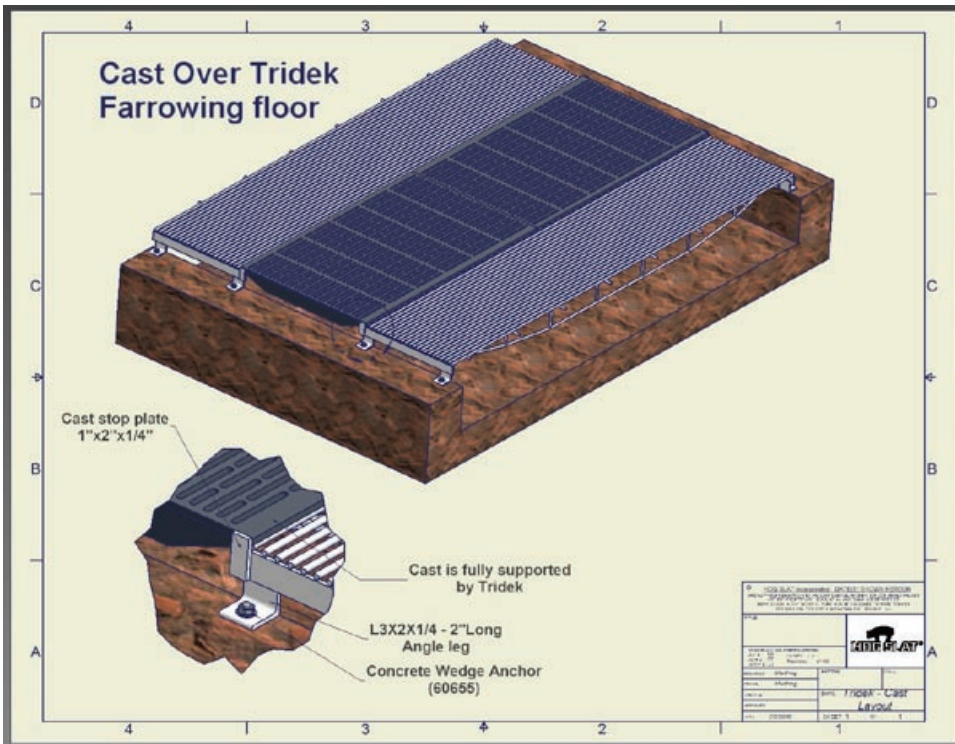
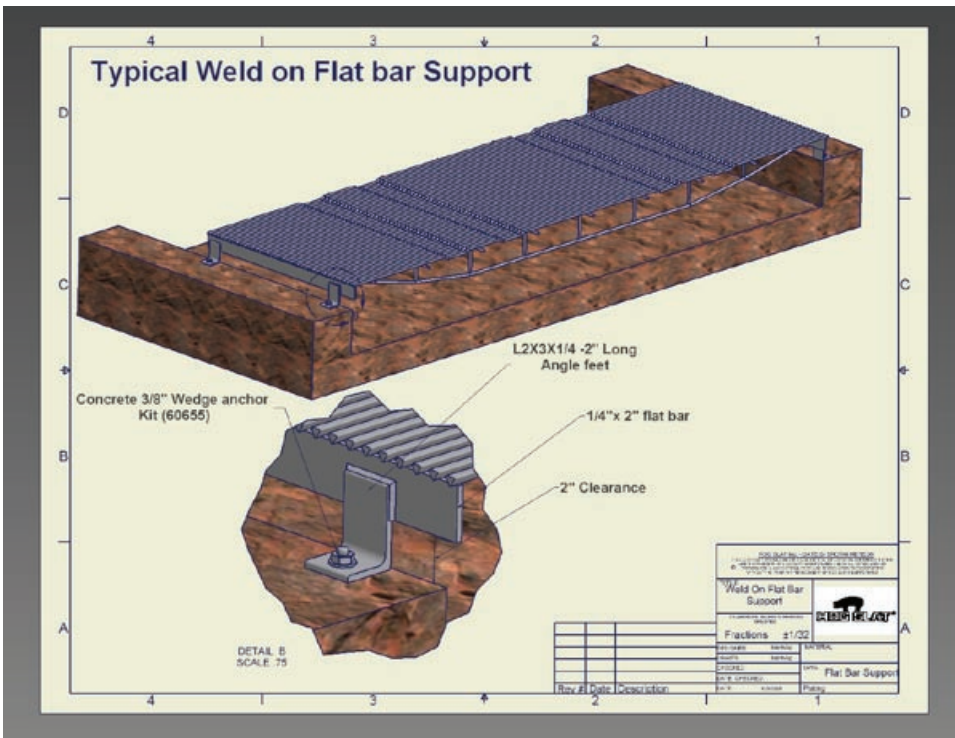


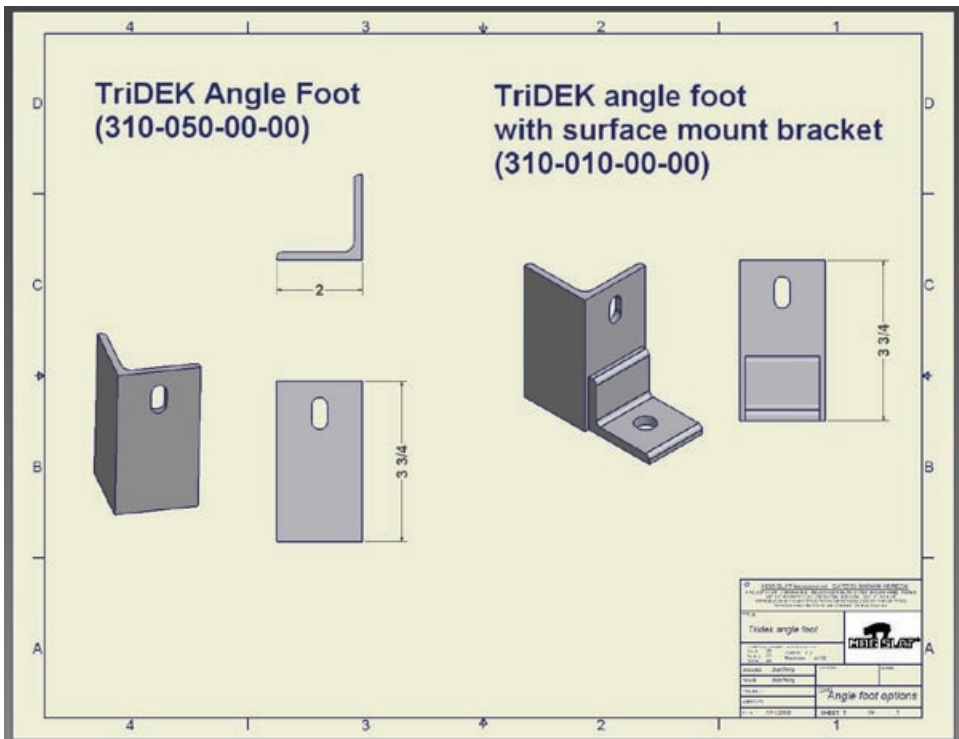
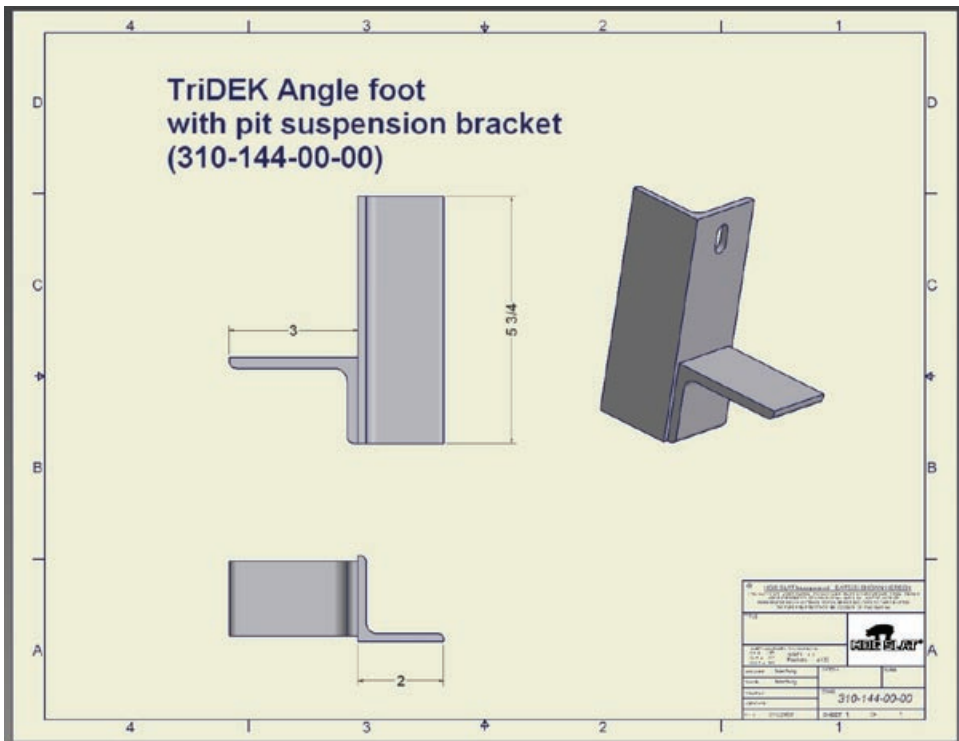


Support and Legs

- 3/16" x 2" x 2" x 10' TriDEK Angle Support, Galvanized- Part # 3060100200
- 3-3/4" TriDEK Angle Leg with Tabs, Galvanized- Part# 3100100200
- 7-3/4" TriDEK Angle Leg with Tabs, Galvanized- Part # 3100150200
- 3-3/4" TriDEK Straight Angle Leg, Galvanized- Part # 3100500200
- 6" TriDEK Straight Angle Leg, Galvanized- Part # 3100510200
- 4" TriDEK Straight Angle Leg, Galvanized- Part # 3100520200
- 5" TriDEK Straight Angle Leg, Galvanized- Part # 3100530200
- 5-3/4" TriDEK Angle Leg, Galvanized- Part # 3101440200
- 30" x 120" Self Supported No-Slip TriDEK- Part # 3280080200

*See attachment for drawings.





TRIDek

Flooring Systems

