



# X-Brace Series

“Farm Smart” Design  
54” Fan

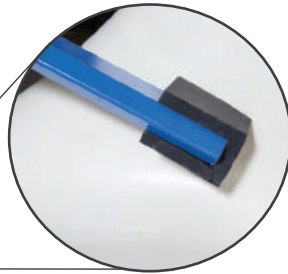


\*Shown with optional poly cone

“Farm Smart” design emphasizes on using corrosion resistant materials to reduce maintenance and delivering energy efficient airflow at typical operating static pressures.

- Gel Coated Fiberglass Housing with optional poly cone
- X-Brace support for increased stability
- Rubber corner mounts reduce vibration
- Stainless steel motor and bearing mounts
- Stainless Steel Prop
- Plastic shutter
- 1-1/2 HP motor with increased service factor

Type	Item #	0.00" STATIC PRESSURE		0.05" STATIC PRESSURE		.10" STATIC PRESSURE		.15" STATIC PRESSURE		Bess Lab #
		CFM	CFM/WATT	CFM	CFM/WATT	CFM	CFM/WATT	CFM	CFM/WATT	
W/ Cone	<b>AS-54XEBDLP</b>	30,900	20.8	29,400	19.1	27,600	17.4	25,600	15.7	17263
High Efficiency	<b>AS-54XEBDLP-HE</b>	28,500	23.2	26,700	20.9	24,400	18.6	21,700	16.1	17265
No Cone	<b>AS-54XEBDLP</b>	28,100	18	26,400	16.5	24,600	15	22,700	13.6	17264



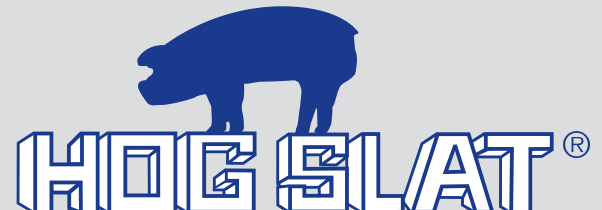
## Rigid X-Brace Supports

Innovative X-Brace design moves the anchor points of the support arms to the housing corners for maximum stability. The support arms are manufactured from aluminum tube with a blue epoxy coating for increased corrosion protection and incorporate a triangular edge profile to reduce wind turbulence. Rubber corner mounts cushion the fiberglass housing from fan vibrations.

1-800-949-4647

www.hogslat.com

World Leader in Swine Production Solutions

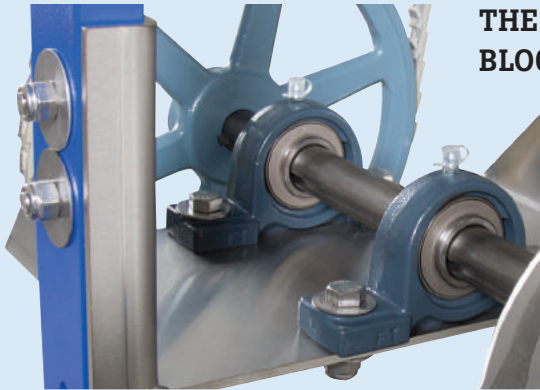




# X-Brace Series

"Farm Smart" Design  
54" Fan

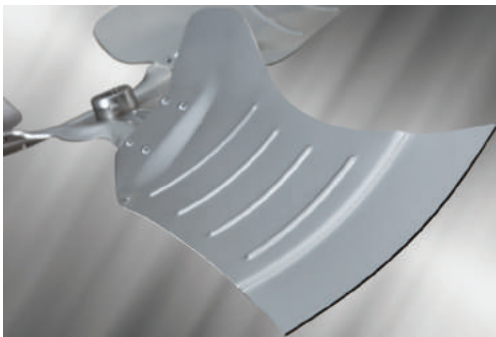
## THE BEST PILLOW BLOCK EVER



## Improved Bearing Life

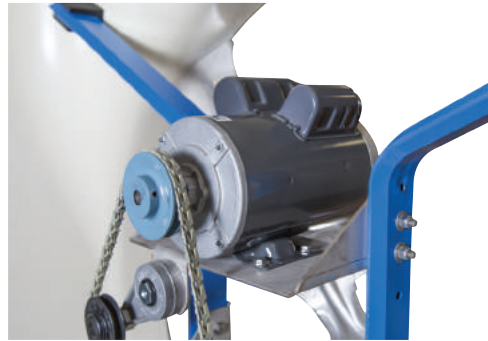
New solid base bearing housing increases mounting stability, reducing vibration significantly. The new bearing also includes a double-lip FloBack seal to improve lubrication and add additional protection against contamination to reduce maintenance.

Fan features Stainless Steel motor and bearing mounting plates.



## Flat Performance Curve

Fans integrate proprietary stainless steel props configured for peak air delivery at typical static pressures.



## Efficient Drive System

Powerful High Service Factor 1.5 HP motor. Self-adjusting tensioner automatically keeps the 1/2" link belt at the proper tightness for maximum efficiency.



## Low Maintenance Shutter

Fabricated with a heavy PVC frame, reinforced corners, and a generous 1" flange. The PVC vanes feature a true airfoil pattern with spring steel rods extending the entire length of the shutter with unique lockdown ends.

1-800-949-4647

[www.hogslat.com](http://www.hogslat.com)

World Leader in Swine Production Solutions

