



VENTILATION

WORLD LEADER IN SWINE & POULTRY PRODUCTION SOLUTIONS





GrowerSELECT's AirStorm Fiberglass Fans deliver superior ventilation performance to producers who demand the best value.

AirStorm Technical Data

Model	Size/Type	Rough Opening	Internal Material	Drive	Speed	RPM	Motor Frame	Motor HP	Motor #
AS-18EDDLP	18" Exhaust	26" X 26"	SS	Direct	Variable	1725	56	1/3	HS9008
AS-24EDDLP	24" Exhaust	34.5" X 34.5"	SS	Direct	Variable	1075	56	1/3	HS9006
AS-36EDDLP	36" Exhaust	43" X 43"	Alum./SS	Direct	Variable	850	56	1/2	HS9009A
AS-54EBDLP	54" Exhaust	58" X 60.5"	Alum./SS	Belt	Single	1725	56	1-1/2	HS9014

AirStorm Discharge Cones

Model	Cone	Material
AS-18EDDLP	AS-18206	Polyethylene
AS-24EDDLP	AS-24106	Fiberglass
	AS-24206	Polyethylene
AS-36EDDLP	AS-36206	Polyethylene
AS-54EBDLP	AS-54206	Polyethylene



AirStorm Fan Performance

Model	0.00" SP		0.05" SP		0.10" SP		0.15" SP	
	CFM	CFM/WATT	CFM	CFM/WATT	CFM	CFM/WATT	CFM	CFM/WATT
AS-24EDDLP	Bess Test #14520							
	7,400	16.8 @ .00SP	6990	15.2 @ .05SP	6,620	13.9 @ .10SP	6,200	12.6 @ .15SP
AS-24EDDLP	Bess Test #14569 *Performance shown with no cone							
	6,480	13.4 @ .00SP	6,110	12.3 @ .05SP	5,670	11.2 @ .10SP	5,170	10.1 @ .15SP
AS-36EDDLP	Bess Test #14580							
	11,550	20.6 @ .00SP	10,780	18.4 @ .05SP	9,940	16.4 @ .10SP	8,900	14.2 @ .15SP
AS-36EDDLP	Bess Test #14578 *Performance shown with no cone							
	10,510	17.7 @ .00SP	9,790	16.0 @ .05SP	8,980	14.4 @ .10SP	8,150	12.8 @ .15SP
AS-54EBDLP	Bess Test #14589							
	27,800	21.6 @ .00SP	26,000	19.4 @ .05SP	24,200	17.3 @ .10SP	22,000	15.1 @ .15SP

*Tested by Bess Laboratories, University of Illinois



Efficient Features



Corrosion resistant stainless-steel motor mounts and hardware. Heavy-duty fan guards with baked on finish.



Engineered for Durability:

Molded using a light resin transfer with UV stabilizers, AirStorm fans are capable of withstanding the most extreme environments. White PVC shutters feature full-length spring steel rods - instead of plastic pins - locked into a heavy PVC frame with reinforced corners.



Internal Components:

Stainless (36" & 54") or composite (24" & 36") props outlast plastic or aluminum. High Service Factor motors provide protection from varying electrical voltage. All fans are compatible with GrowerSELECT motors.



Self-adjusting Belt Tensioner:

Self-adjusting belt tensioner automatically maintains correct belt tightness. Link style belt improves performance and reduces replacement costs. One-inch shaft with permanently lubricated ball bearings prevent damage from dust contamination.

GrowerSELECT Variable Speed Fan Motors

*Use of Original Equipment Manufacturer part numbers is for reference only.

Item#	HP	RPM	Voltage	*AP OEM Part#	Fan Size
HS9028KIT**	1/6	3300	115/230	15-0145	8" & 10"
HS9007	1/4	1725	115/230	15-0109	14"
HS9008	1/3	1725	115/230	15-0110	18"
HS9006	1/3	1075	115/230	15-0105	24"
HS9009A	1/2	850	115/230	15-0116	36"



**Single speed

GrowerSELECT Variable Speed Fan Motors

Item#	HP	RPM	Voltage	*AP OEM Part#	Fan Size
HS9031	1/6	3250	120/240	FM1038	9"
HS9003	1/8	1625	120/240	FM1010	14"
HS9002	1/3	1625	120/240	FM1009	18"
HS9001	1/3	1075	120/240	FM1008	24"



GrowerSELECT Single Speed Fan Motors

Item#	HP	RPM	Voltage	Frame	Amps	Use
HS9005	1/2	850	115/230	48	6.6/3.3	Direct Drive, 36" box or stir fan only!
HS9015	1/2	1725	115/208-230	56	5.3/2.6-2.6	Belt Drive, 36"
HS9010	1	1725	115/208-230	56	11.2/6.0-5.6	Belt Drive, 48"-50"
HS9000	1	1725	115/208-230	56	8.6/4.9/4.3	Belt Drive, 48"-50" (High S.F. 1.4 Motor**)
HS9019	1-1/2	1725	115/208-230	56	12.8/7.0/6.4	Belt Drive, 52"-54"
HS9014	1-1/2	1725	115/208-230	56	10.8/5.4	Belt Drive, 52"-54" (High S.F. 1.5 Motor**)



**SF = Service Factor. †Do not use on fans operating against static pressure.



18" Circulation Fan

- ▶ Wide guard spacing reduces buildup and allows for easier cleaning
- ▶ Versatile mounting bracket allows for easy tilt and swivel of fan
- ▶ 1/8 HP motor covered by 2-year warranty
- ▶ Complete with pre-wired cord HANG IT UP-PLUG IT IN
- ▶ 3-Speed
- ▶ 115V
- ▶ 2500 CFM
- ▶ .88 AMPS
- ▶ Aluminum Blade

Item# **WS-F18S-3**

AMPS	Speed	FPM*	Thrust (lbf)	kW	Thrust Eff Ratio**	RPM	Thrust CFM	Thrust CFM/Watt
.9	1	640	1.11	.100	11.1	1,623	1,770	17.7
	2	400	0.74	.066	11.3	1,203	1,450	22.0
	3	370	0.49	.052	9.5	988	1,180	17.7

* FPM (Feet Per Minute) - Velocity measured center line at distance 5 time the prop diameter ** Thrust Efficiency Ratio is calculated by dividing the Thrust (lbf) by the kW



Stir Fans

- ▶ 115/230 Volts
- ▶ Durable, epoxy-coated guard
- ▶ Unique hinged front, simply unhook and swing open for fan maintenance
- ▶ Comes with adjustable tilt bracket

Item#	Description	Amps	FPM*	Thrust (lbf)	Thrust Eff Ratio**	kW	RPM	Thrust CFM	Thrust CFM/Watt
VB12	12", Variable	1	525	0.76	7	0.109	1,705	970	8.9
VB20	20", Variable	4	1,135	3.69	11	0.336	1,706	3,580	10.7
VB24	24", Variable	4.8	1,195	5.62	12.2	0.459	1,716	5,300	11.5
VBS36A	36", Single	7	940	8.5	15.5	0.55	823	9,880	18

* FPM (Feet Per Minute) - Velocity measured center line at distance 5 time the prop diameter

** Thrust Efficiency Ratio is calculated by dividing the Thrust (lbf) by the kW



Stir Fan Motors

- ▶ Replacement motors for Schaeffer, Windstorm
- ▶ Single phase commercial duty
- ▶ Yoke/Pedestal fan motors
- ▶ TEAO (totally enclosed air over)
- ▶ 1-phase ▶ 60 Hz
- ▶ 115/230 volts

Item#	HP	Size	RPM	Frame
VR110	1/10	12" fan	1725	48Y
VR13	1/3	20" fan	1725	48Y
5330016	1/2	24" fan	1725	48Y
VR12A	1/2	36" fan	825	48Y



Replacement Blades

- ▶ For Schaeffer and Windstorm stir fans

Item#	Size	Bore Size
VRB12A	12"	1/2"
VRB12A	20"	1/2"
VRB24A	24"	5/8"
VRB36D3	36"	5/8"

36" Box Fan

The Windstorm™ 36" box fan provides outstanding performance at an affordable price. Galvanized steel housing with secure wire guard which is easily removed for service. The Windstorm 36" box fan features a 1/2 HP.

Item#	Description	RPM	Thrust CFM	Thrust CFM/Watt
WS-36BDD	36" Box Fan	850	9,430	18.7



52" Galvanized Butterfly Fan

The ideal fan for remodeling or adding extra CFM to increase the wind speed in your house. Designed to fit between the existing studs without costly extra construction.

WS-F52B2: High capacity **WS-F52B-HE2:** High Efficiency

Item#	Bess Lab Test#	.00 Static Pressure		.05 Static Pressure		.10 Static Pressure		Airflow Ratio
		CFM	CFM/Watt	CFM	CFM/Watt	CFM	CFM/Watt	
WS-F52B2	14099	30,100	21.6	28,900	19.9	27,500	18.1	.81
WS-F52B-HE2	14100	27,700	25.2	26,300	22.7	24,700	20.4	.80



54" Slant Wall Fan

Windstorm™ 54" belt driven galvanized slant wall fan with cone and shutters. Shutters feature galvanized metal frame and aluminum shutters. Galvanized metal cone features perforated edges that allow fans to be installed closer to each other in retrofit applications, reducing the need to reframe each fan opening.

- ▶ Belt driven, 1HP 1725 RPM 120/240V
- ▶ Heavy G90 galvanized housing and cone
- ▶ FullFlow galvanized shutter reduces air drag
- ▶ Balanced galvanized prop
- ▶ Encased shaft and ball bearing assembly
- ▶ Premium link belt included
- ▶ Perforated cone for easier side to side install

Item#	Bess Lab Test#	.00 Static Pressure		.05 Static Pressure		.10 Static Pressure		Airflow Ratio
		CFM	CFM/Watt	CFM	CFM/Watt	CFM	CFM/Watt	
WS-54SBDLA	14344	28,400	23.6	27,100	21.5	25,400	19.2	.75



54" Panel Fan

Item# WS-54PBDBG

Windstorm™ 54" belt driven galvanized panel fan with cone and shutter. Link style belt improves performance and reduces replacement costs. Butterfly shutter increases efficiency and performance. Bolt-on wall fan is great for retrofit applications, with no framing required. Fan fits 48", 52", and 54" fan openings.

Linear Actuator

Delivering precision for all stages of ventilation.

HS667-24 Linear Actuator

Features:

- ▶ High quality motor bearings.
- ▶ IP65 Rating.
- ▶ Bi-directional control with potentiometer feedback for position sensing of inlets.
- ▶ Equipped with an adjustable limit switch.

Electrical Specifications:

120V AC @ 60 Hz, 1.4 A, 167W

Position Sensor: 10K ohm potentiometer

Mechanical Specifications:

Max Load: 350 kgs./772 lbs.

Max Speed: 6.3 mm./1/4" per second

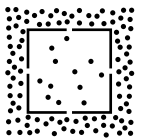
Stroke Length: 610 mm./24"



Optimum IP65 Rating

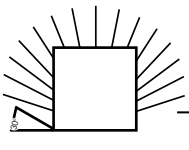
Georgia Poultry's Linear Actuator has a superior seal to prevent water intrusion and prevent internal corrosion. The HS667-24 is better sealed around the motor and end cap, plus offers clamped boots over the ends of the extension tube to further seal the unit.

Other actuators on the market are rated IP53



5

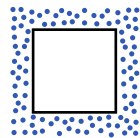
Protection against entry of dust in sufficient quantity to interfere with satisfactory operation of equipment.



3

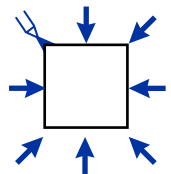
Protection against spraying water at up to 60 feet from the vertical.

Georgia Poultry's HS5667-24 actuator is rated IP65



6

Complete protection against entry of dust.



5

Protection against low pressure jets of water from all practicable directions.

HS653 Negative Pressure Vent Controller



A Pressure reading drops below this limit, the vent machine **CLOSES** vents to raise the pressure inside.

Area between limit pointers, no adjustments are made.

B Pressure reading exceeds this limit, the vent machine **OPENS** vents to lower the pressure inside.

C **Low Pressure setting adjustment knob.**

Clockwise to raise limit,
Counter clockwise to lower limit.

D **High Pressure setting adjustment knob.**

Clockwise to raise limit,
Counter clockwise to lower limit.

E Manual OPEN/CLOSE

F AUTO/MANUAL Selection

GrowerSELECT[®]

CURTAIN MACHINE



Powerful screw machine accurately controls curtains, inlets, and tunnel doors.



Optional chain & sprocket drive eliminates cable breakage. Features a 13 tooth sprocket with a size 50-5/8" roller chain.

Smooth Operation

Aluminum load block rides on acetal plastic bearings and guide blocks imbedded in the cabinet side, for smooth motion and to stabilize the shaft.



Easy Servicing

Features a removable front cover, precision cut outs, and swivel points to allow for easy removal of the ACME screw and block.



Three sealed, ball bearing head pulleys for multiple mounting options. Farm-duty, ACME screw efficiently transfers power to load block.



Suited for Multiple Motor Sizes

Fitted for 120V, 240V, 15 and 30 RPM models.



Simple Limit Switch

Dual limit switch is backed by secondary safety lock-out switch. Includes auxiliary switch for backup fans.

Local Controls

Manual control switch allows for quick adjustments of the screw and limit switch positions directly from the box.



#HS583E-241524" travel, 15 RPM, cable system
#HS583E-243024" travel, 30 RPM, cable system
#HS583E-246024" travel, 60 RPM, cable system
#HS583E-2430S24" travel, 30 RPM, sprocket drive
#HS583E-361536" travel, 15 RPM, cable system
#HS583E-363036" travel, 30 RPM, cable system

#HS583E-366036" travel, 60 RPM, cable system
#HS583E-3630S36" travel, 30 RPM, sprocket drive
#HS583E-481548" travel, 15 RPM, cable system
#HS583E-483048" travel, 30 RPM, cable system
#HS583E-486048" travel, 60 RPM, cable system
#HS583E-4830S48" travel, 30 RPM, sprocket drive



EVAP SYSTEMS

Cools incoming air to reduce heat stress in buildings.



Excellent Drainage



Large square poly trough offers greater capacity than round troughs and allows for trough to set directly on concrete foundation without brackets. Diamond Cut trough cover increases drainage area by 33% to eliminate water pooling at the bottom of the pad. Water recycles quicker and pad life is extended because the pad bottom does not remain soggy.

Spray Bar

Large capacity spray bar features bell end to eliminate 5" dead spots common with coupled pipe.



Pad Retainer

The single point pad retainer allows complete wetting of the pad top unlike competitive systems where as much as the top 3" remains dry.

Easy Inspection



Aluminum open-top system allows for easy inspection of the spray bar. The top is secured with rust resistant brass inserts for easy maintenance and inspection.

Zero Force Pad Retention System

Minimizing exterior forces to pads to eliminate pad compression over time.

Trough Bracket

GrowerSelect's heavier and wider Bi-Fold trough bracket is fabricated with two gussets for solid support. Will not shift like single gusseted brackets and allow trough to sag.



Trouble-Free Pump



The system is fed by a trouble-free Jet or Submersible pump.

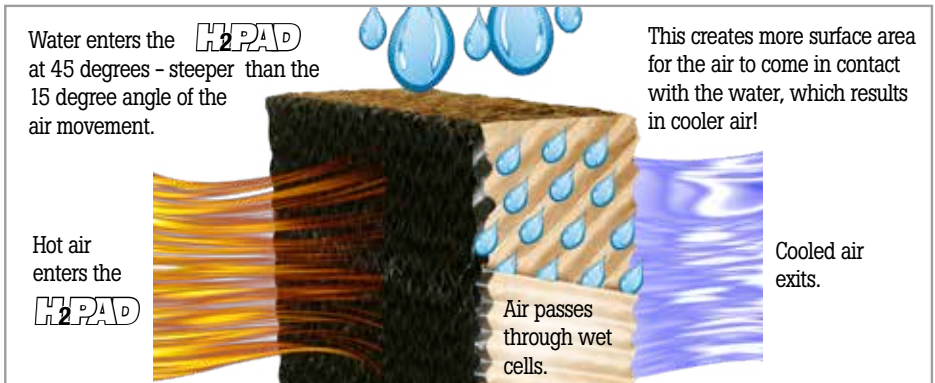


H2PAD

Manufactured of quality cellulose paper, oven-cured with acrylic polymer glue and fungicides.



- 3/4" ProTec edging.
- Prevents build-up of algae and minerals for increased pad life.
- Protects against damage from UV lights and severe weather.
- Self-cleaning 45/15 flute design provides low-pressure drop on incoming air.
- Impregnated wetting agents increases cooling efficiency.



Item#	Description
H2-64E	H2Pad 6" x 12" x 48" Pro Tec Edge 15/45 Flute
H2-65E	H2Pad 6" x 12" x 60" Pro Tec Edge 15/45 Flute
H2-66E	H2Pad 6" x 12" x 72" Pro Tec Edge 15/45 Flute

GrowerSELECT Cool Cell Pumps

GrowerSELECT Jet Pump

3/4 HP
240V



GrowerSELECT Jet Pump

3/4 HP
120V



- Minimized friction and turbulence reduce power consumption.
- Self-priming pump design protects internal components from wear.
- Transparent lid allows easy installation of strainer basket.

- Larger strainer basket capacity extends time between clean outs.
- Easy access drain plug for service and winterizing.
- 1-1/2" discharge pipe.
- Enclosed fan cooled motor.
- Includes 9 ft. power cord.

GrowerSELECT Submersible Pump

Delivers 3/4 HP performance with a 1/2 HP pump
Electrical usage is decreased by 25%

- Oil filled motor.
- Epoxy coated, cast iron housing.
- 2" discharge with 1-1/2" bushing to adapt to most systems.
- 2" bottom suction inlet.
- Silicon carbide seal.
- 115/230 Volt.
- 15' waterproof power cord.



GrowerSELECT Cool Cell Sump Tank

High Capacity sump tank for submersible pump installations holds 60% more water than most sump tank systems - giving you more efficiency and water capacity.





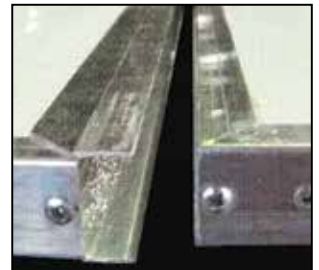
tego Tunnel Doors

TEGO Tunnel Door system reduces energy loss over typical tunnel curtains with improved R value and superior door seal.



Off-Set Hinge System

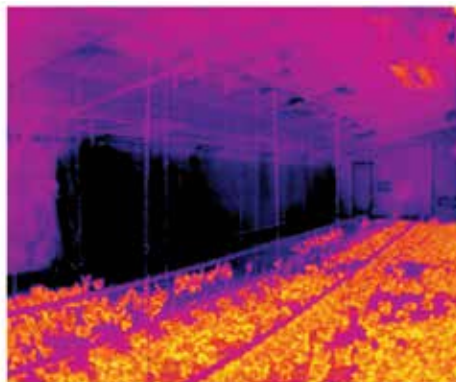
Off-set hinge system allows panels to move away from the wall and seal when open to prevent accumulation of dust and dirt in the bottom of the panel, providing for a tighter seal when closed.



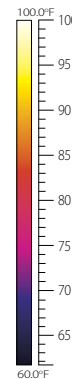
C-Lock Panel Connection

Integrated C-Lock Panel connection eliminates the need for additional tools or fasteners.

▶ Typical Tunnel Curtain



▶ TEGO Tunnel Door System



"Supplied by UGA Agricultural Engineering Department"



Insulated Panel

1" thick R-7 injected foam panel with aluminum skin and structural supports. Also available in 1-1/2" thickness with insulation value of R9.



For more information on Georgia Poultry's products and services, contact your local Georgia Poultry representative or visit us online at www.gapoultry.com

1-800-949-4647

www.hogslat.com | www.gapoultry.com

World Leader in Swine Production Solutions