



HS569A-120, HS569A-200, HS569A-300 Feed Line Hoppers

General Installation Notes:

Make sure that power is disconnected from system prior to servicing.

Installation of this equipment and related OEM equipment should be in accordance with these instructions, OEM's installation instructions and local codes (if applicable). Failure to follow specified instructions may cause damage to equipment and/or personal injury or death.

Take special note of any Warnings or Safety Decals on the equipment and in manuals.

Always wear protective clothing and any applicable Personal Protective Equipment (Safety Glasses and/or Ear Plugs) when working with the equipment.

Discarded materials, equipment and boxes should be recycled in accordance with local and national codes.

Unless otherwise specified, all Feed Delivery Systems (Diameters) are installed similarly.

Safety Instructions:

Read all safety messages in this manual and on equipment safety decals. Follow recommended precautions and safe operating practices.

Ground all electrical equipment for safety.

Ground all non-current carrying metal parts to guard against electrical shock.

Always keep safety decals in good condition and replace missing or damaged decals.

Overview:

The GrowerSELECT HS569A Feed Line Hopper series is intended for use within the feed systems and is designed to provide optimum capacity with exceptional durability. Available hoppers provide 120, 200, or 300 pounds of feed storage capacity while eliminating bulk for increased maneuverability. The multiple suspension system allows for the hopper(s) to be suspended by either 1 point or 2 point methods.

HS569A-120 120 Pound Feed Line Hopper

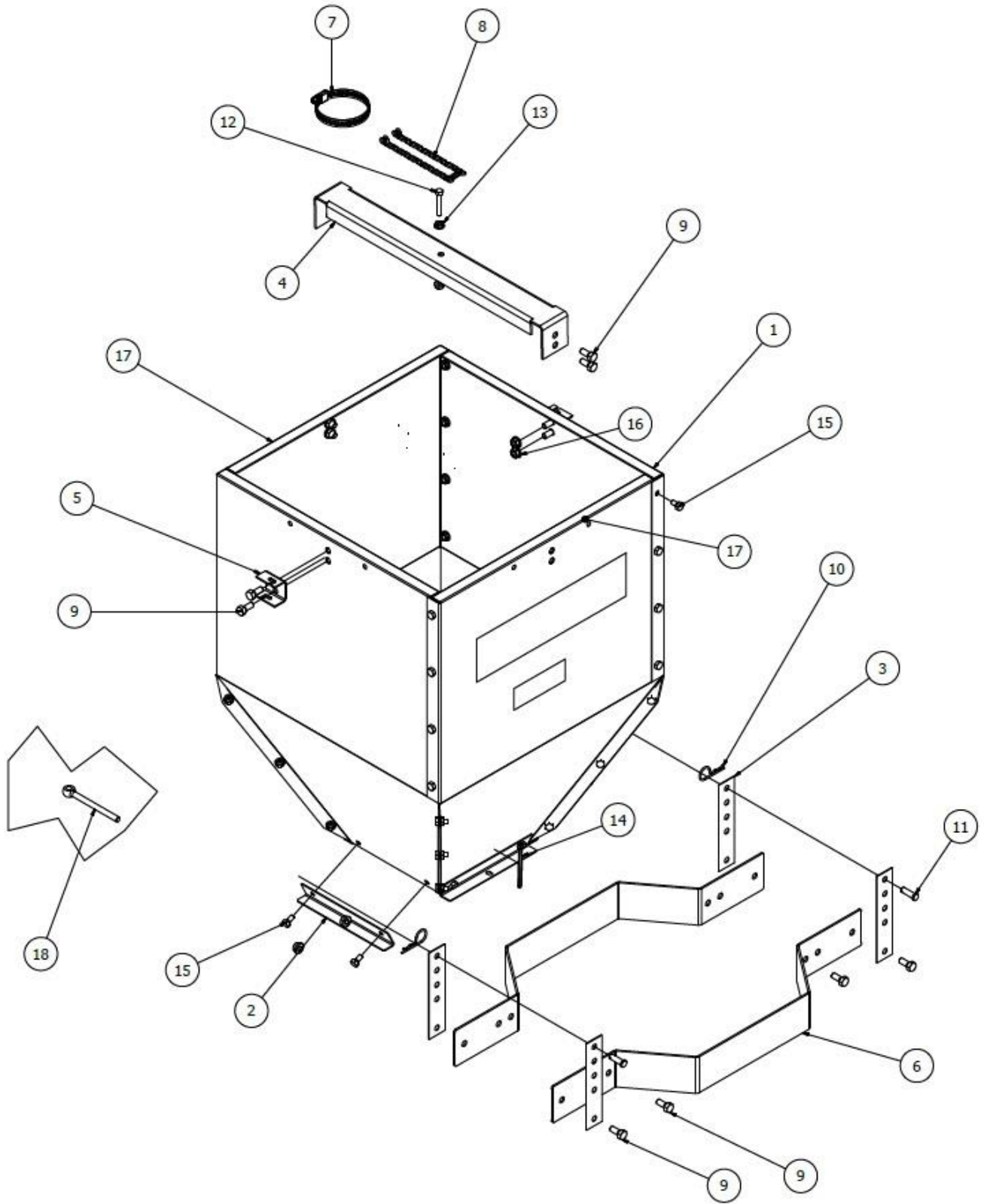


Figure 1

HS569A-120

ITEM	QTY	PART NUMBER	DESCRIPTION
1	2	HS569-1	SIDE SHEET, HOPPER
2	4	HS569-4	BRACKET, BOOT HANGER
3	4	HS569-3	BRACKET, HOPPER ADJUSTMENT
4	1	HS569-7	Top Brace
5	2	HS569-8	Cable Guide Bracket
6	2	HS569-42	Suspension Bracket
7	1	FP28030076	Clamp 1-7/8" To 5", 1/2" Band
8	1	HS569-5	Chain, Support Tube 12"
9	13	60508	Hex Bolt 5/16-18 X 0.75
10	2	606351	5/16-1/2, Cotter Hairpin, 0.093 Dia X 2" Long
11	2	60802	Clevis Pin 0.3125 X 1.06
12	1	616510	Plain Hex Head Machine Screw 1/4-20 X 1.5
13	58	60577	Hex Serrated Flange Nut 1/4-20 Zinc
14	1	60699	Cotter Pin, 3/16 X 2.5 In
15	48	60500	Bolt, 1/4" X 1/2"
16	13	60624	Nut, Serrated Flange, 5/16-18 Yellow Gr.2
17	2	HS569-1-LABEL	Side Sheet, Hopper, 120# With Label
18	1	606664	Bolt, Eye 5/16" X 4"
N/S	1	HSMANUAL-127	Feed Hopper Installation Manual

HS569A-200, HS569A-300 200 & 300 Pound Feed Line Hopper

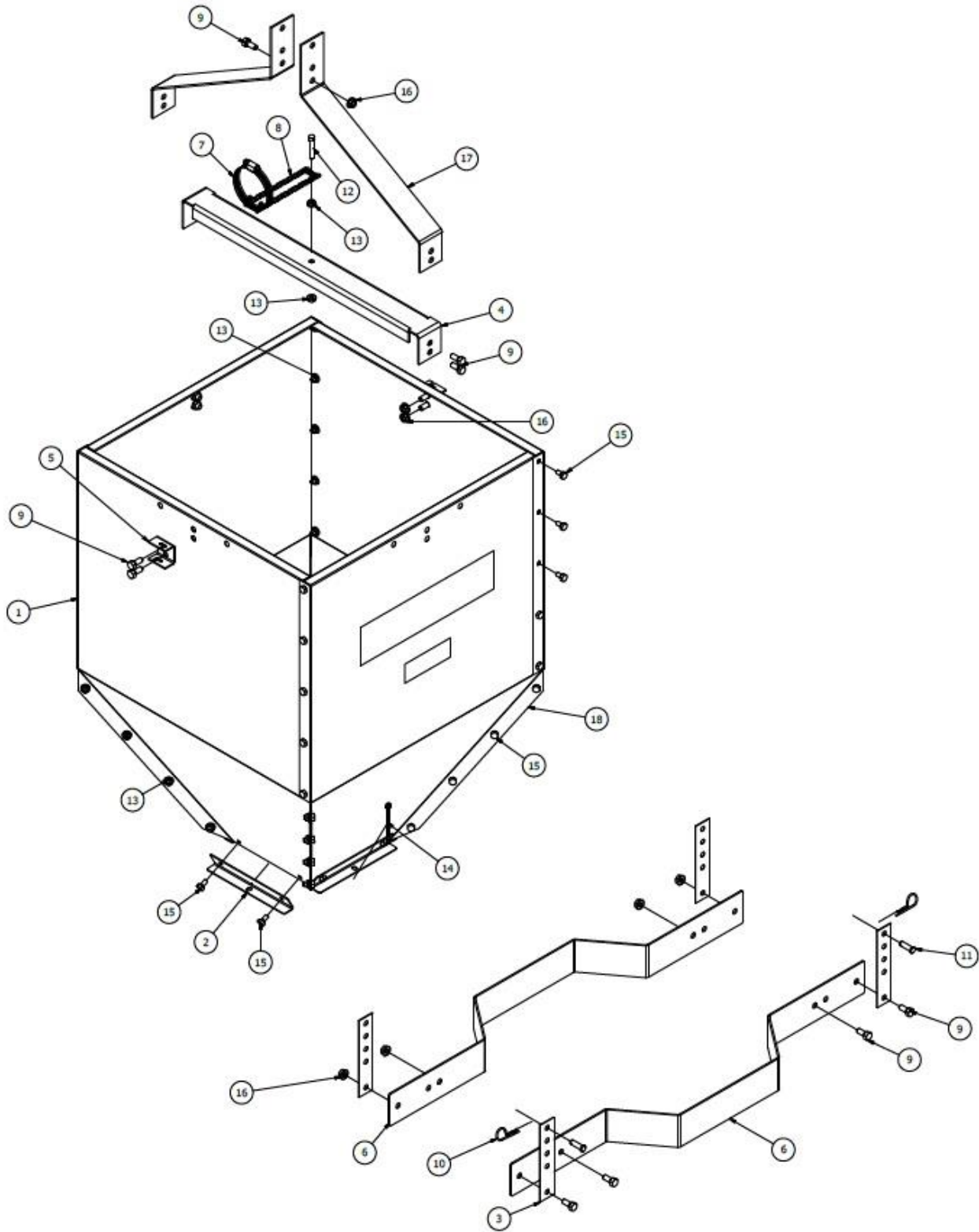


Figure 2

HS569A-200

ITEM	QTY	PART NUMBER	DESCRIPTION
1	2	HS569-21	SIDE SHEET, HOPPER, 200#
2	4	HS569-4	BRACKET, BOOT HANGER
3	4	HS569-3	BRACKET, HOPPER ADJUSTMENT
4	1	HS569-27	Support, Top Hopper 200#
5	2	HS569-8	Cable Guide Bracket
6	2	HS569-43	Suspension Bracket-Large
7	1	FP28030076	Clamp 1-7/8" To 5", 1/2" Band
8	1	HS569-5	Chain, Support Tube 12"
9	13	60508	Hex Bolt 5/16-18 X 0.75
10	2	606351	5/16-1/2, Cotter Hairpin, 0.093 Dia X 2" Long
11	2	60802	Clevis Pin 0.3125 X 1.06
12	1	616510	Plain Hex Head Machine Screw 1/4-20 X 1.5
13	58	60577	Hex Serrated Flange Nut 1/4-20 Zinc
14	1	60699	Cotter Pin, 3/16 X 2.5 In
15	48	60500	Bolt, 1/4" X 1/2"
16	13	60624	Nut, Serrated Flange, 5/16-18 Yellow Gr.2
17	2	HS569-22	Support, Hopper Angled 200#
18	2	HS569-21-LABEL	SIDE SHEET, HOPPER, 200# WITH LABEL

HS569A-300

ITEM	QTY	PART NUMBER	DESCRIPTION
1	2	HS569-31	SIDE SHEET, HOPPER, 300#
2	4	HS569-4	BRACKET, BOOT HANGER
3	4	HS569-3	BRACKET, HOPPER ADJUSTMENT
4	1	HS569-37	Support, Top Hopper 300#
5	2	HS569-8	Cable Guide Bracket
6	2	HS569-43	Suspension Bracket-Large
7	1	FP28030076	Clamp 1-7/8" To 5", 1/2" Band
8	1	HS569-5	Chain, Support Tube 12"
9	13	60508	Hex Bolt 5/16-18 X 0.75
10	2	606351	5/16-1/2, Cotter Hairpin, 0.093 Dia X 2" Long
11	2	60802	Clevis Pin 0.3125 X 1.06
12	1	616510	Plain Hex Head Machine Screw 1/4-20 X 1.5
13	50	60577	Hex Serrated Flange Nut 1/4-20 Zinc
14	1	60699	Cotter Pin, 3/16 X 2.5 In
15	48	60500	Bolt, 1/4" X 1/2"
16	13	60624	Nut, Serrated Flange, 5/16-18 Yellow Gr.2
17	2	HS569-32	Support, Hopper Angled 300#
18	2	HS569-31-LABEL	SIDE SHEET, HOPPER, 300# WITH LABEL

Assembly:

1. Assemble (4) Side Sheet Hopper Panels (Ref# 1) as shown above in Figure 1 using Hex Bolts 1/4-20 X 0.5" (Ref# 15) and Hex Flange Nuts 1/4-20 (Ref# 13). Hand Tighten
2. Attach (4) Boot Hanger Brackets (Ref# 2) to the outside of the hopper body as shown above in Figure 1 using Hex Bolts 1/4-20 X 0.5" (Ref# 15) and Hex Flange Nuts 1/4-20 (Ref# 13). Hand Tighten
3. Attach (2) Cable Guide Brackets (Ref# 5) to outside of hopper body as shown above in Figure 1 using Hex Bolts 5/16-18 X 0.75" (Ref# 9) and Hex Flange Nuts 5/16-18 (Ref# 16). Hand Tighten
4. Attach Top Brace (Ref# 4) to outside of hopper body as shown above in Figure 1 using Hex bolts 5/16-18 X 0.75" (Ref# 9) and Hex Flange Nuts 5/16-18 (Ref# 16). Hand Tighten
5. Loosely assemble (2) Suspension Brackets (Ref# 6) around the unloader as shown below in Figure 3 using Hex bolts 5/16-18 X 0.75" (Ref# 9) and Hex Flange Nuts 5/16-18 (Ref# 16).

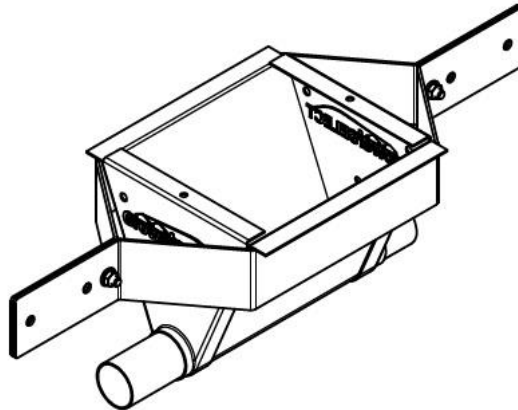


Figure 3

6. Attach (4) Hopper Adjustment Brackets (Ref# 3) as shown above in Figure 1 using Hex bolts 5/16-18 X 0.75" (Ref# 9) and Hex Flange Nuts 5/16-18 (Ref# 16). Hand Tighten.
7. Suspend Lower Assembly using Clevis Pins (2) (Ref# 11) and Hairpins (2) (Ref# 10) from feed system support cables.
8. Slide bottom of hopper body into upper channel of the Unloader and secure with Cotter Pin (Ref# 14) as shown above in Figure 1.
9. Redirect suspension cables to travel through Cable guide bracket to provide lateral support.
10. Attach Hose Clamp (Ref# 7) to Top Brace (Ref# 4) using 1/4-20 X 1.5" Machine Screw (Ref# 12), Hex Flange Nuts 1/4-20 (Ref# 13), and Chain (Ref# 8).

Single Point Suspension:

HS569-120 120 Pound Hopper

If hopper requires only 1 point suspension included Eye Bolt can be attached to Top Brace to provide a contact point for single point suspension as shown in Figure 4 for 120 Pound Hopper.

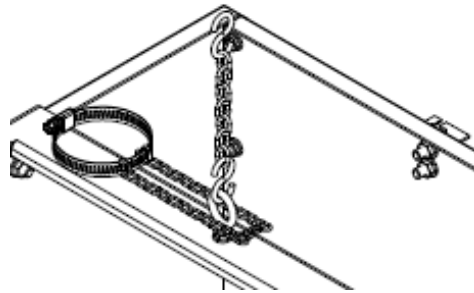


Figure 4

HS569-200, HS569-300 200 & 300 Pound Hoppers

If hopper requires only 1 point suspension Angled Support Brackets (Ref# 17) can be attached around the Top Brace to provide a contact point for single point suspension as shown in Figure 5 for 200 and 300 Pound Hoppers.

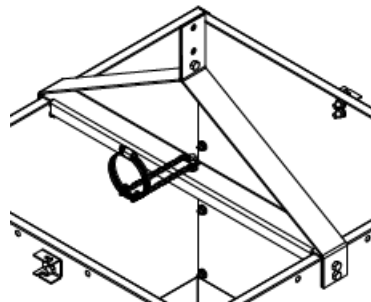


Figure 5

This equipment must be installed in accordance with all State and Local Codes and applicable Regulations which should be followed in all cases. Authorities having jurisdiction should be consulted before installations are made.



**Hog Slat, Inc.
PO Box 300
Newton Grove, NC 28366**

**Phone: (910) 594-0219
Fax: (910) 594-1392**

www.hogslat.com

Part Number: HSMannual-127
HSART-481 Revision IR

Copyright © 2017 by Hog Slat, Inc.