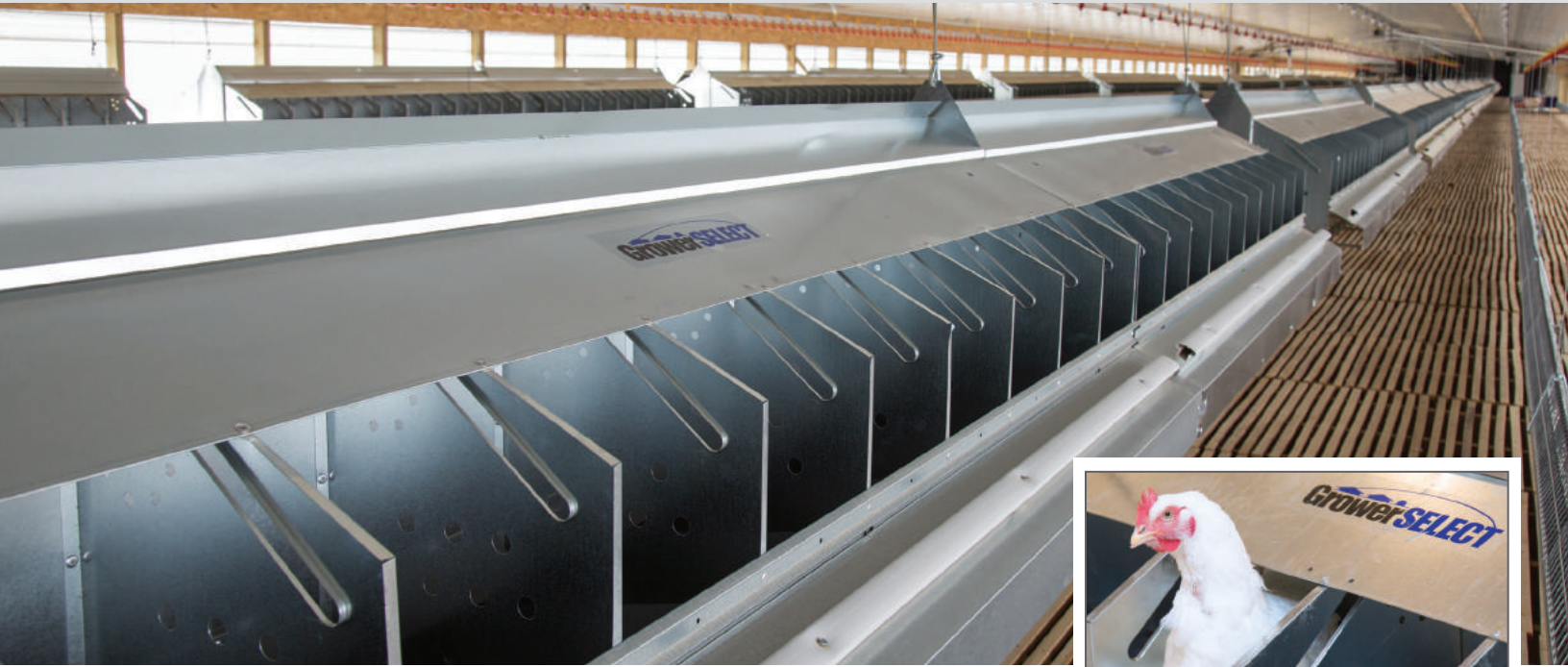


GrowerSELECT[®] Breeder Nest Systems

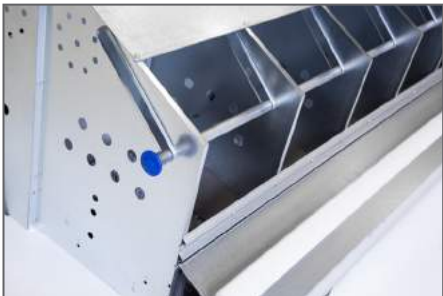
Maximize breeder flock production with a comfortable, secure nesting system from GrowerSELECT.



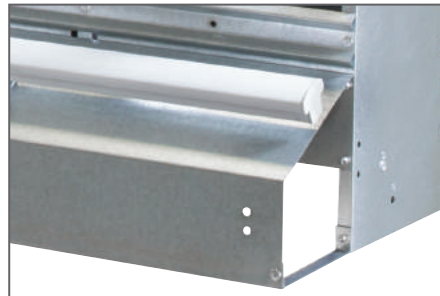
- Choose from 20 hole (9.6" wide) and 16 hole (12" wide) nests.
- Both Side Belt and Center belt options available.



Open top design allows hens easy access to nests.



Choose from manual nest closure or integrated tube closure for automated systems.



Includes Poly Comfort Perch ergonomically designed to increase bird comfort. Mushroom shape fits bird paw promoting better balance.

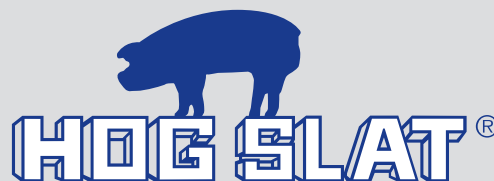


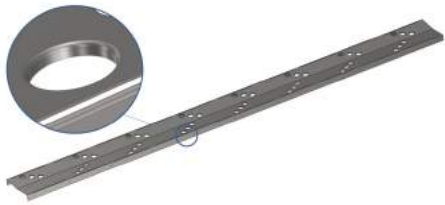
Open grill polypropylene nest bottom permits trash to fall through and improves air circulation. Choose from turf style or rubber finger pads.

1-800-949-4647

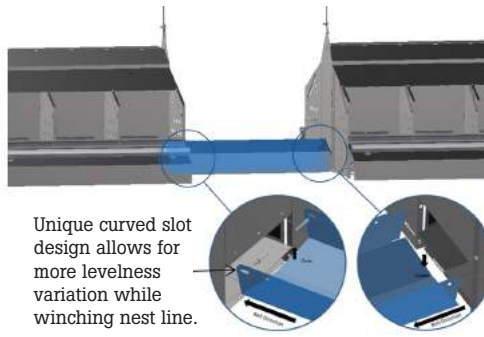
www.hogslat.com

World Leader in Swine & Poultry Production Solutions



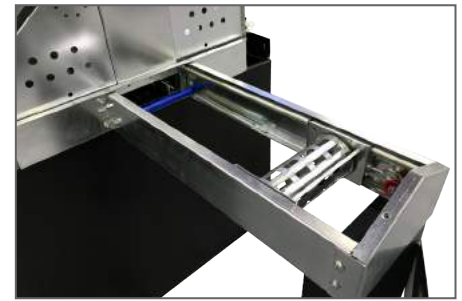


Belt tray holes are punched and extruded to eliminate debris from hanging on the edges, which allows the use of both plastic and cloth belt operation through the same nest.



Unique curved slot design allows for more levelness variation while winching nest line.

Isle trays are designed to allow for more variation from winching without nest damage.



Tensioning device allows for almost twice the belt stretch as traditional tables. This significantly reduces belt adjustments due to stretch or thermal expansion/contraction.



Center Belt Collection Table



Side belt collection table

GrowerSELECT

Egg Collection Tables

Innovative pinch roller design maintains belt tension to reduce slippage.

Preprogrammed controller features "soft start and stop" to reduce egg damage, while PVC guide rail safely directs eggs to collection point.

Collection Table Features

- Available in Center-Belt and Side-Belt models
- Table height is adjustable from 27" to 42"
- Magnetic vinyl coated table tops are easily removed for cleaning.
- Self-regulating tensioning device permits greater range of adjustment.
- Pre-wired NEMA4X controller requires no programming with "soft start and stop"
- Belt speed of 17 to 27 fpm
- Large collection trays under table collect dirt and debris.
- Handles 5" or 8" cloth or plastic belting.

1-800-949-4647

www.hogslat.com

World Leader in Swine & Poultry Production Solutions

