



FS400 Farmstead Single Hog Feeder

General Assembly Notes:

Take special note of any Warnings or Safety Decals on the equipment and in manuals.

Always wear protective clothing and any applicable Personal Protective Equipment (Safety Glasses and/or Ear Plugs) when working with the equipment.

Discarded materials, equipment and boxes should be recycled in accordance with local and national codes.

Some additional hardware has been provided for your convenience.

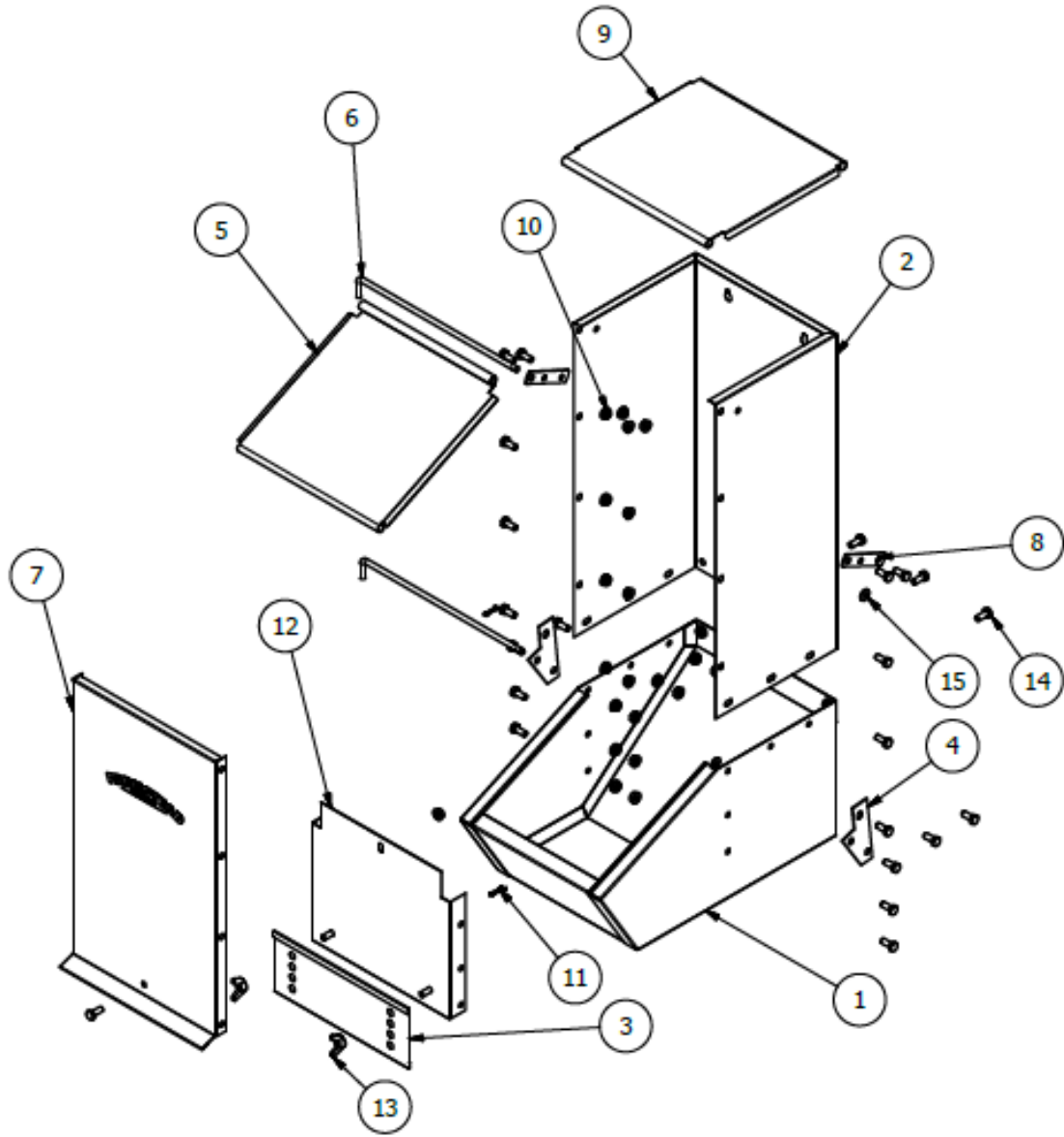
Safety Instructions:

Read all safety messages in this manual and on equipment safety decals. Follow recommended precautions and safe operating practices.

Always keep safety decals in good condition and replace missing or damaged decals.

Tools Required:

- ½" Wrench And ½" Deep Socket



Parts list on next page

PARTS LIST			
ITEM	QTY	PART NUMBER	DESCRIPTION
1	1	FS400-7	Lower Trough Assembly
2	1	FS400-8	Upright, Back and Sides
3	1	FS400-3	Plate, Feed Adjustment
4	2	FS400-2	Bracket, Lid Rod
5	1	FS400-5	Lid, Trough
6	2	FS400-10	Rod, Hinge
7	1	FS400-9	Cover, Front
8	2	FS400-1	Hinge, Top
9	1	FS400-4	Lid, Top
10	24	HS722	Nut, 5/16-18 Hex Serrated Flange
11	2	C2663	Pin, Cotter 1/8" X 3/4"
12	1	FS400-6	WELDMENT, PANEL, LOWER
13	2	606685	Nut, Wing 5/16"-18 Zinc
14	24	60508	Bolt 5/16" X 3/4"
15	2	605800	Washer Flat Zinc 5/16"

Assembly Instructions:

1. Place FS400-6 into FS400-7 and align holes on both sides. The screws should be facing the front as shown. Tighten a bolt and nut in the two bottom holes with 1/2" socket and wrench.



Feeders

2. Place FS400-8 around the outside of FS400-7 aligning the holes.



3. Attach bracket FS400-2 on both sides as shown with a bolt and nut. Finger tighten for now. Only use bottom hole on bracket as the top will be needed in later steps.

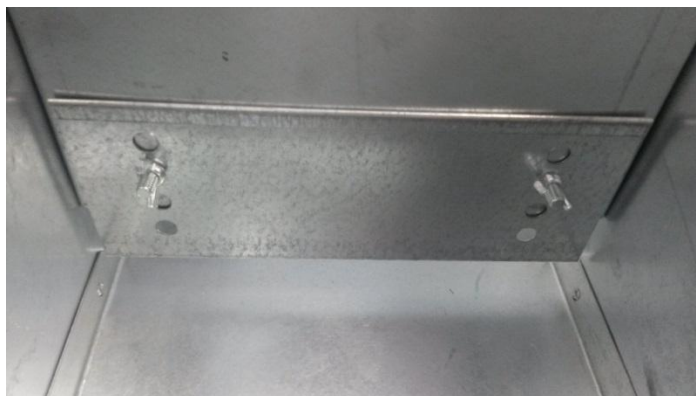


4. Using the 1/2" socket and wrench, tighten nuts and bolts around bottom as shown.

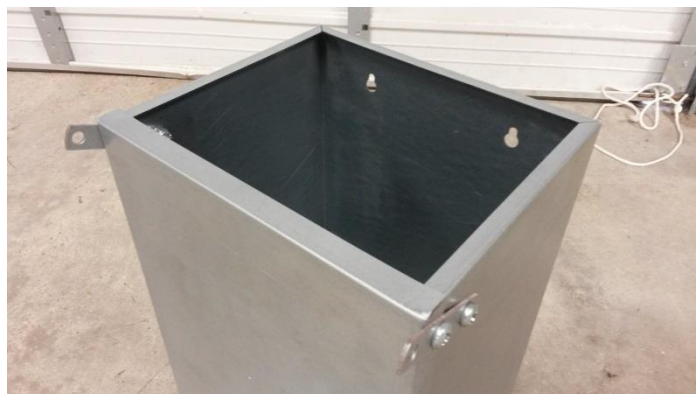


Feeders

- Secure FS400-3 to FS400-6 with wing nuts as shown. You can use the height setting of your choosing.



- Fasten FS400-9 to front of feeder. The brackets installed in step 3 should be on the outside of the front panel. Now tighten both bolts securing the FS400-2 brackets. Install FS400-1 with nut and bolt as shown. Also place these brackets on the outside of the front panel. Tighten with 1/2" socket and wrench.



7. Make sure all nuts and bolts are tightened with the 1/2" socket and wrench.



8. Install screw on front panel as shown and tighten with the 1/2" socket and wrench.



Feeders

9. Install the top lid FS400-4 by inserting rod FS400-10 through one side of lid as shown. Secure with washer and cotter pin.



10. Attach bottom lid FS400-5 by inserting rod FS400-10 through the angled up end of the lid. Secure with washer and cotter pin.





**Hog Slat, Inc.
PO Box 300
Newton Grove, NC 28366**

**Phone: (910) 594-0219
Fax: (910) 594-1392**

www.hogslat.com

Copyright © 2016 by Hog Slat, Inc.