



FS300 Farmstead 4 Space Chicken Nest

General Assembly Notes:

Take special note of any Warnings or Safety Decals on the equipment and in manuals.

Always wear protective clothing and any applicable Personal Protective Equipment (Safety Glasses and/or Ear Plugs) when working with the equipment.

Discarded materials, equipment and boxes should be recycled in accordance with local and national codes.

Safety Instructions:

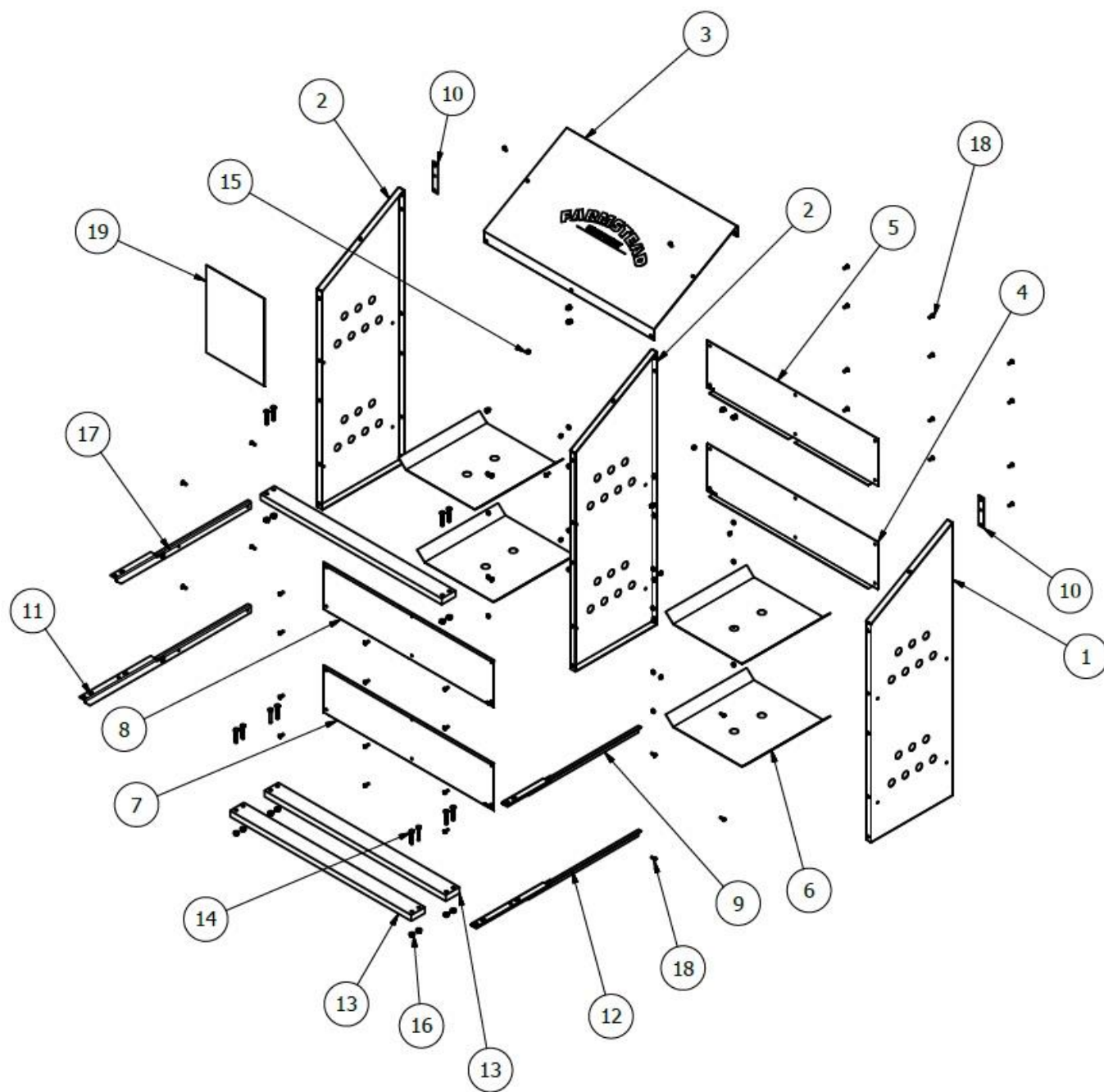
Read all safety messages in this manual and on equipment safety decals. Follow recommended precautions and safe operating practices.

Always keep safety decals in good condition and replace missing or damaged decals.

Tools Required:

- #2 Phillips Head Screw Driver
- 3/8" Wrench or Socket
- 7/16" Wrench and Socket

Feeders



PARTS LIST			
ITEM	QTY	PART NUMBER	DESCRIPTION
1	1	FS300-1	Right Partition
2	2	FS300-2	Left Partition
3	1	FS300-6	Panel, Roof
4	1	FS300-4	Panel, Back Bottom
5	1	FS300-5	Panel, Back Top
6	4	FS300-3	Nest Bottom
7	1	FS300-13	Panel, Front-Bottom
8	1	FS300-14	Panel, Front-Top
9	1	FS300-8	Bracket, Perch, Top Right Asy
10	2	FS300-12	Bracket, Hanging
11	1	FS300-10	Bracket, Perch, Bottom Left Asy
12	1	FS300-11	Bracket, Perch, Bottom Right Asy
13	3	FS300-7	BOARD, PERCH
14	12	ANSI B18.2.1 - 1/4-20 UNC - 1.5	Hex Cap Screw
15	42	ANSI B18.6.3 - 10 - 24	Hex Machine Screw Nut
16	12	IFI - I0.25 - 20	Hex Flange Nut
17	1	FS300-9	Bracket, Perch, Top Left Asy
18	42	ANSI B18.6.3 - No. 10 - 24 - 1/2	Cross Recessed Pan Head Machine Screw - Type IA
19	1	HSMANUAL-111	Assembly Instructions for FS300 Farmstead 4 Space Chicken Box

Assembly Instructions:

1. Take item 1 and using the No. 10 screws and nuts attach it to the far right end of item 4 and item 7. Items 7 and 4 are marked on the bottom right corner of each part with "Front Bottom" and "Back Bottom" respectfully. The roof of the chicken nest slopes toward the front of the assembly. Item 1 is the only upright partition that has its flanges bent the opposite way from the other two. (See picture below)



Feeders

Now that you have attached item 1 to items 4 and 7 you can attach the other two upright partitions (Item 2) to item 4 and item 7 in the same manner with the No. 10 screws and nuts.



Feeders

- Next, insert the box bottom (Item 6) as shown. The angled edges should be on the left and right side of each space.



- Attach front top panel (Item 8) and back top panel (Item 5) with No. 10 screws and nuts. Again, check the bottom right corner of the part to make sure they say "Front Top" and "Back Top."

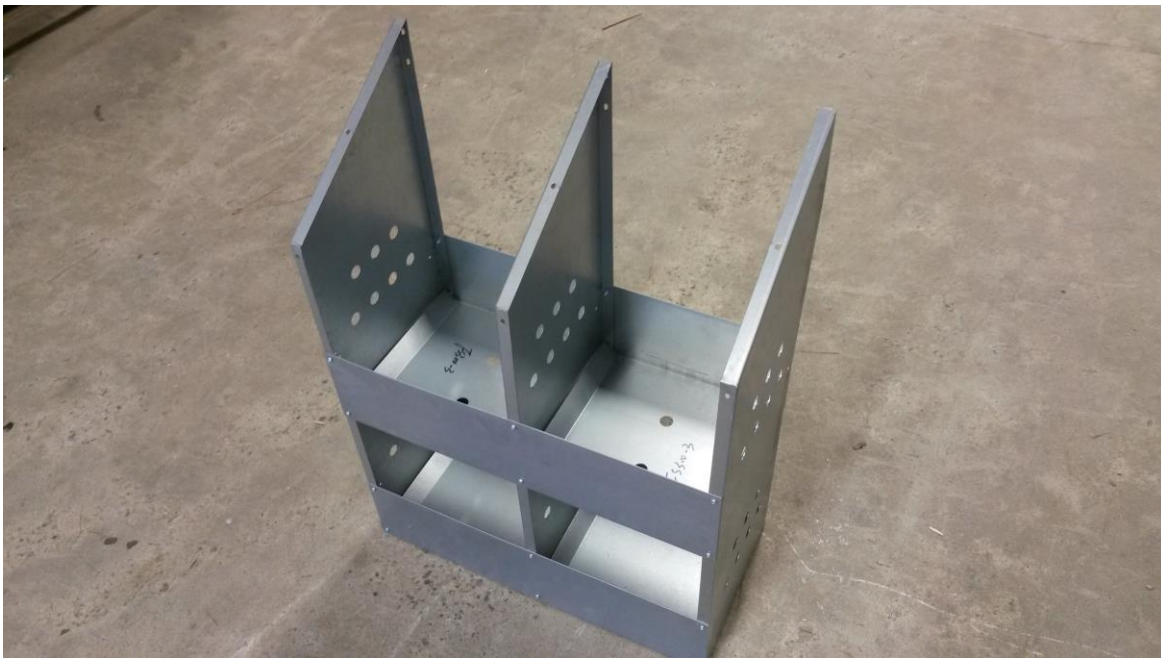


Feeders

- Now put the top level of box bottoms (Item 6) in.



- At this point your box should look like this.



6. Attach the bottom brackets (Items 11 and 12) as shown.



7. Install the bottom perch boards (Item 13) as shown with the 1/4-20 bolts and hex flange nuts.



8. Attach top brackets (Items 9 and 17) in the same manner as the bottom ones.



9. Install the top perch board (Item 13) as shown with the 1/4-20 bolts and hex flange nuts.



10. Attach roof (Item 3) as shown. At the same time attach hanging bracket, item 10. The top screw on the hanging bracket also secures the ends of the roof on the back side.



11. Your chicken nest is ready to be used.





**Hog Slat, Inc.
PO Box 300
Newton Grove, NC 28366**

**Phone: (910) 594-0219
Fax: (910) 594-1392**

www.hogslat.com

Copyright © 2016 by Hog Slat, Inc.