



# **FS301 Farmstead 10 Space Chicken Nest**

---

## **General Assembly Notes:**

Take special note of any Warnings or Safety Decals on the equipment and in manuals.

Always wear protective clothing and any applicable Personal Protective Equipment (Safety Glasses and/or Ear Plugs) when working with the equipment.

Discarded materials, equipment and boxes should be recycled in accordance with local and national codes.

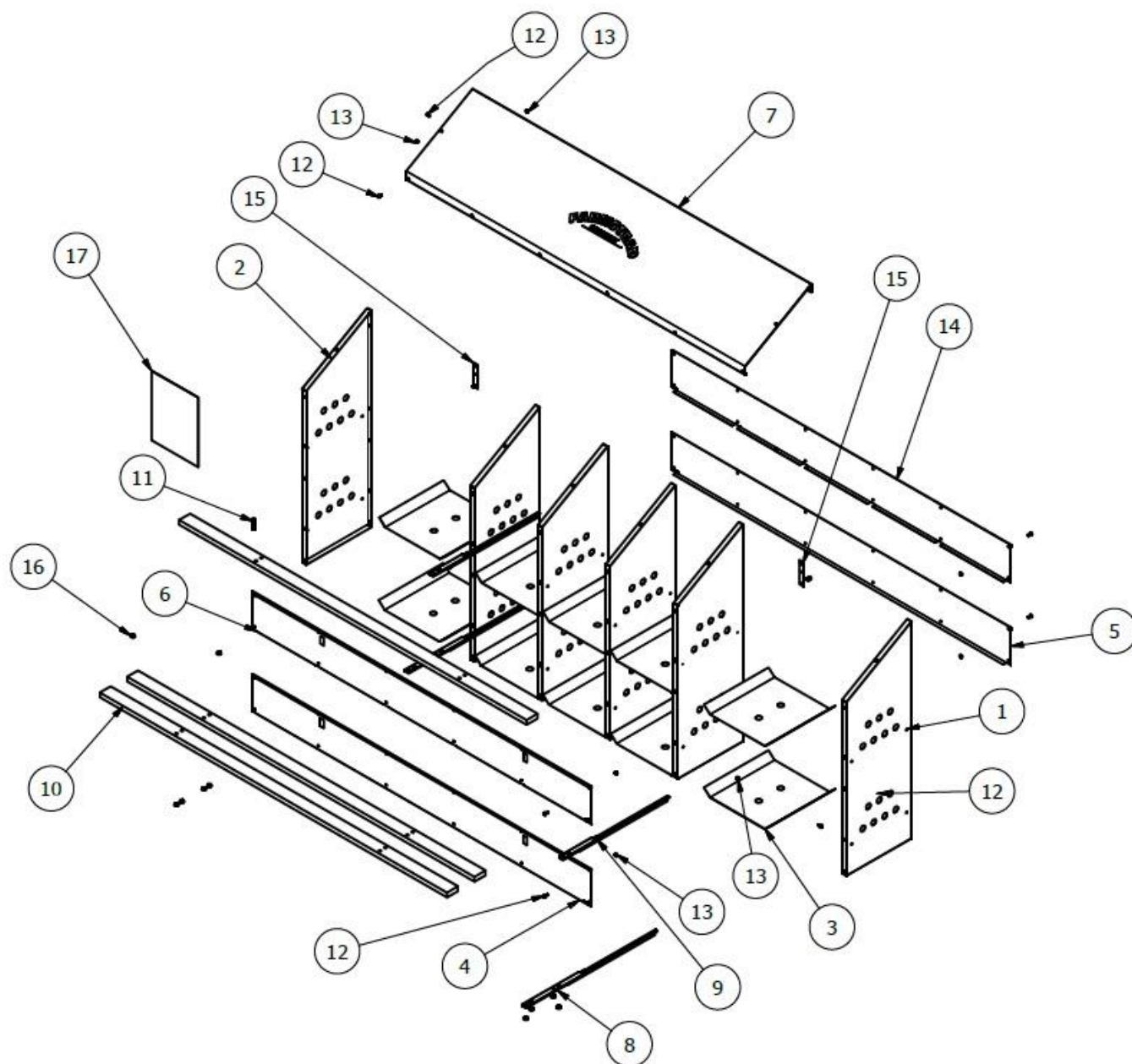
## **Safety Instructions:**

Read all safety messages in this manual and on equipment safety decals. Follow recommended precautions and safe operating practices.

Always keep safety decals in good condition and replace missing or damaged decals.

## **Tools Required:**

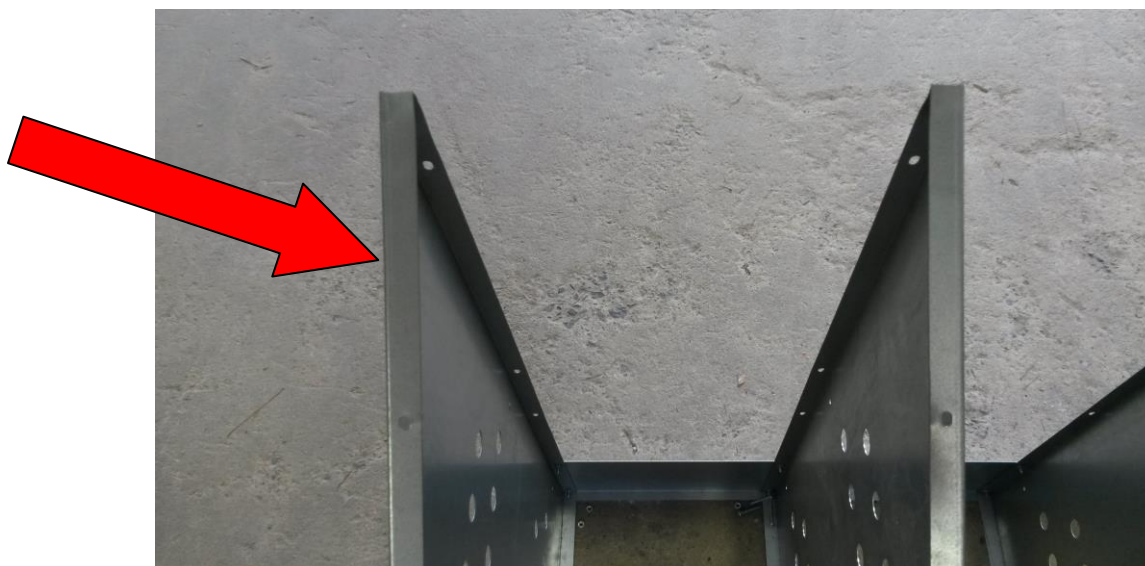
- #2 Phillips Head Screw Driver
- 3/8" Wrench or Socket
- 7/16" Wrench and Socket



PARTS LIST			
ITEM	QTY	PART NUMBER	DESCRIPTION
1	5	FS300-1	Right Partition
2	1	FS300-2	Left Partition
3	10	FS300-3	Nest Bottom
4	1	FS301-1	Panel, Front-Bottom-10
5	1	FS301-2	Panel, Back Bottom-10
6	1	FS301-4	Panel, Front-Top-10
7	1	FS301-5	Panel, Roof-10
8	2	FS300-11	Bracket, Perch, Bottom Right Asy
9	2	FS300-8	Bracket, Perch, Top Right Asy
10	3	FS301-6	BOARD, PERCH-10
11	12	ANSI B18.2.1 - 1/4-20 UNC - 1.5	Hex Cap Screw
12	72	ANSI B18.6.3 - No. 10 - 24 - 1/2	Cross Recessed Binding Head Machine Screw - Type I
13	72	ANSI B18.6.3 - 10 - 24	Hex Machine Screw Nut
14	1	FS301-3	Panel, Back Top-10
15	2	FS300-12	Bracket, Hanging
16	12	IFI - I0.25 - 20	Hex Flange Nut
17	1	HSMANUAL-110	Assembly Instructions for FS301 Farmstead 10 Space Chicken Box

## Assembly Instructions:

1. Take item 2 and using the No. 10 screws and nuts attach it to the far left end of items 4 and 5. Items 4 and 5 are marked on the bottom right corner of each part with "Front Bottom" and "Back Bottom" respectfully. The roof of the chicken nest slopes toward the front of the assembly. Item 2 is the only upright partition that has its flanges bent the opposite way from the others. (See picture below)



## Feeders

Now that you have attached item 2 to items 4 and 5 you can attach the other five upright partitions (Item 1) to items 4 and 5 in the same manner with the No. 10 screws and nuts.



2. Next, insert the nest bottoms (item 3) as shown. The angled edges should be on the left and right side of each space.





## Feeders

3. Attach front top panel (item 6) with No. 10 screws and nuts. Again, check the bottom right corner of the part to make sure it says "Front Top."



4. Do the same thing for the back top panel.



5. Now put the top level of nest bottoms (item 3) in.



6. At this point your nest should look like this.



## Feeders

7. Attach roof (Item 7) as shown. At the same time attach hanging bracket, item 15. The top screw on the hanging bracket also secures the ends of the roof on the back side. (See second picture below)





8. Attach the bottom brackets (Item 8) as shown.



9. Install the bottom perch boards (Item 10) as shown with the 1/4-20 bolts and hex flange nuts.





10. Attach top brackets (Item 9) in the same manner as the bottom ones.



11. Install the top perch board (Item 10) as shown with the 1/4-20 bolts and hex flange nuts.



12. Your chicken nest is ready to be used.



**NOTES**





**Hog Slat, Inc.  
PO Box 300  
Newton Grove, NC 28366**

**Phone: (910) 594-0219  
Fax: (910) 594-1392**

**[www.hogslat.com](http://www.hogslat.com)**

**Copyright © 2016 by Hog Slat, Inc.**