

GrowerSELECT® HS597-PROX

PROXIMITY HOPPER LEVEL SWITCH CONTROL

General Installation Notes:

Make sure that power is disconnected from system prior to servicing.

Installation of this equipment and related OEM equipment should be in accordance with these instructions, OEM's installation instructions and local codes (if applicable). Failure to follow specified instructions may cause damage to equipment and/or personal injury or death.

Take special note of any Warnings or Safety Decals on the equipment and in manuals.

Always wear protective clothing and any applicable Personal Protective Equipment (Safety Glasses and/or Ear Plugs) when working with the equipment.

Discarded materials, equipment and boxes should be recycled in accordance with local and national codes.

Unless otherwise specified, all Feed Delivery Systems (Diameters) are installed similarly.

Note: Switch Assembly is to be wired in accordance with all applicable local and national electrical wiring codes. All wiring sizes and fuse capacities are to be sized according to applicable electrical code specifications or other regulations.

Safety Instructions:

Read all safety messages in this manual and on equipment safety decals. Follow recommended precautions and safe operating practices.

Ground all electrical equipment for safety.

Ground all non-current carrying metal parts to guard against electrical shock.

Always keep safety decals in good condition and replace missing or damaged decals.

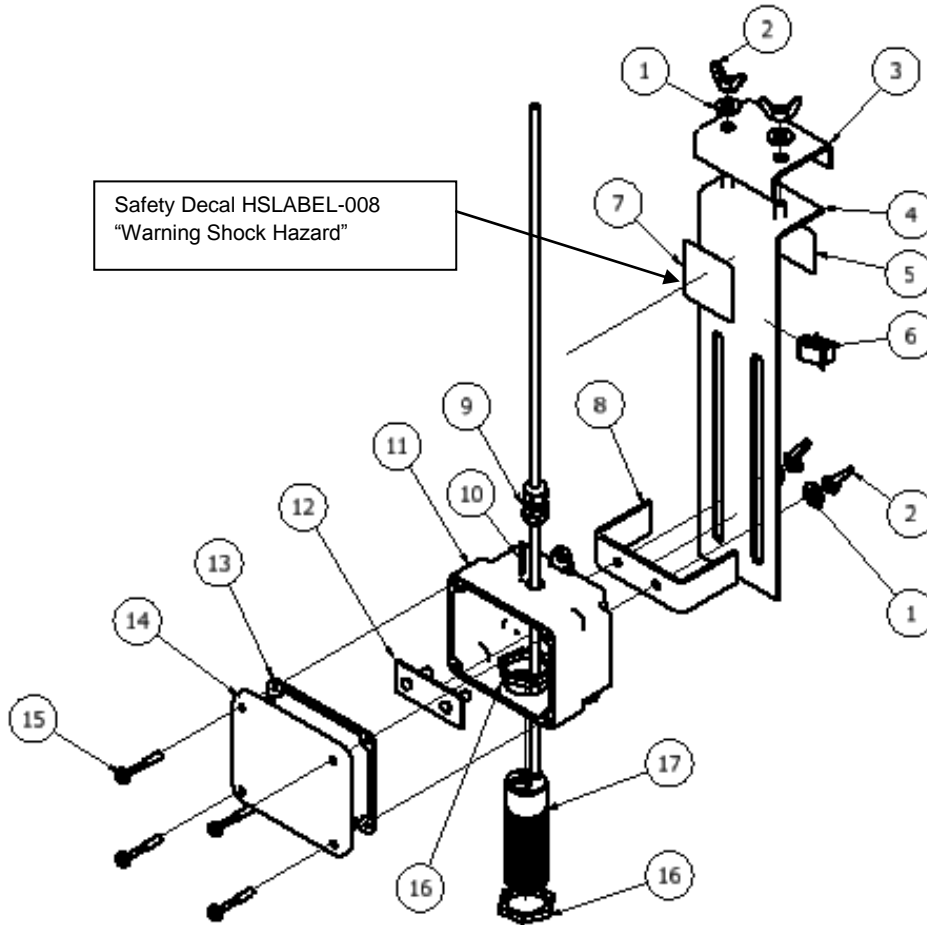
Overview:

The HS597-PROX Hopper Level Switch Control is intended to be used with any conveying system that carries free-flowing feed. The hopper switch will automatically start or stop the fill system as the feed level changes in front of the proximity sensor.

It is designed to work with the **HS765 Multi-Hopper Switch Isolator** that can handle up to four (4) HS597-PROX or HS597 electromechanical type switches. The HS597-PROX is a low current device (200mA max) and can only be used to operate a relay or other low current loads.

The HS597-PROX is designed for use in Poultry Feed Hopper applications. No tools are required for installation or adjustment.

HS597 HOPPER LEVEL CONTROL SWITCH ASSEMBLY



REF #	PART #	DESCRIPTION
1	605800	FLAT WASHER, 5/16"
2	606684	WING NUT 1/4"
3	HS597-9	TOP MOUNT BRACKET
4	HS597-7	ADJUSTMENT BRACKET SLIDE
5	HSLABEL-242	PRODUCT ID LABEL
6	S6407	CABLE CLIP
7	HSLABEL-008	LABEL,WARNING-SHOCK HAZARD (ENGLISH)
8	HS597-6	ADJUSTMENT BRACKET STANDOFF
9	EL1190	LIQUID TIGHT CONNECTOR
10	PLP2-1000	LIGHT PIPE
11	HS8501-1	PLASTIC ENCLOSURE
12	HS597-19	ENCLOSURE SUPPORT BRACKET
13	HS529-49	GASKET
14	HS529-48	COVER
15	60932	10-16 X 1 1/4" HEX HEAD SCREW, SS
16		PROXIMITY MOUNTING NUT
17	EL1213	PROXIMITY SENSOR

Installation:

The HS597-PROX Hopper Level Switch Control should be installed in the last hopper or feeder which is located at the end of the delivery or fill system. The switch should be mounted low in the hopper or feeder so the fill level in the control hopper will be lower than the other hoppers. This will cause the fill system to cycle more frequently insuring a proper feed level in every hopper or feeder. It will also provide a reservoir of feed in the system if another control hopper calls for feed. The feed drop tube should be positioned so that feed is delivered to the center of the hopper. Drop tubes and other hopper switch control units should be positioned high in other hoppers or feeders so that they will fill but not overflow.

1. (Figure 1) Illustrates a typical installation example of the HS597-PROX into a feed hopper.
2. Hopper Level Switch Control is held in place by clamping assembly to the top lip of the feed hopper.
3. Remove the two wing nuts, washers and TOP MOUNTING BRACKET (Item #3) from top of assembly.
4. Slide switch assembly underneath top lip of feed hopper as shown below (figure 1).
5. Replace TOP MOUNTING BRACKET (item #3), washers, wing nuts and tighten in place.
6. **It is recommended the HS597-PROX be mounted vertically.**

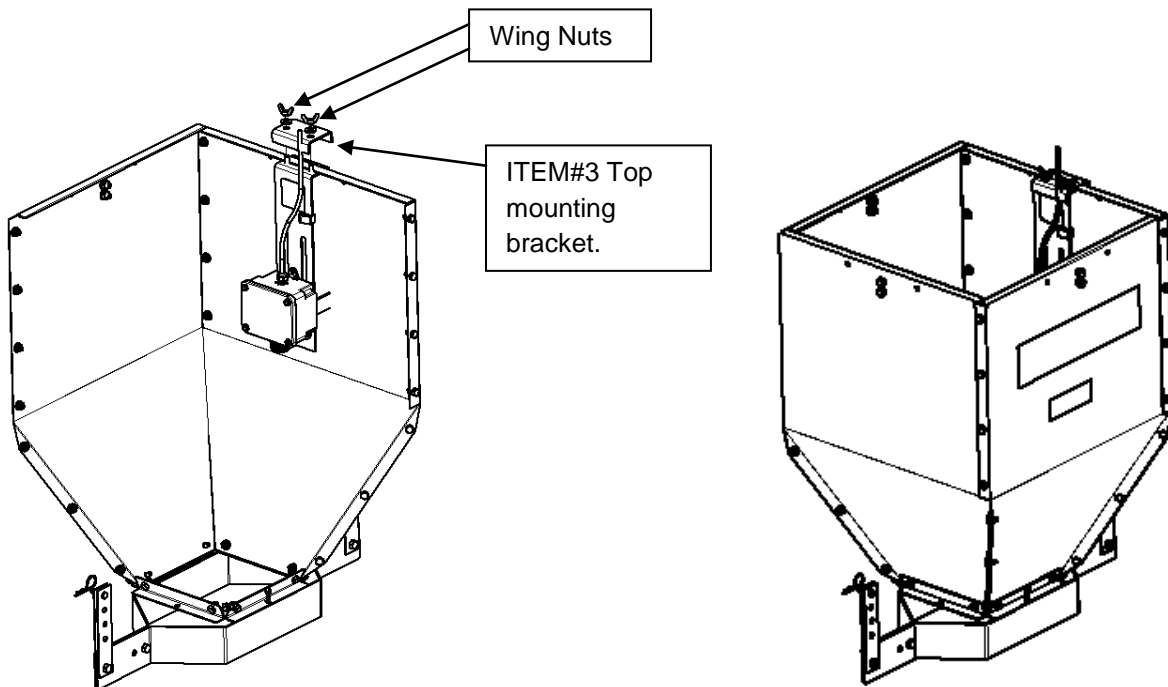
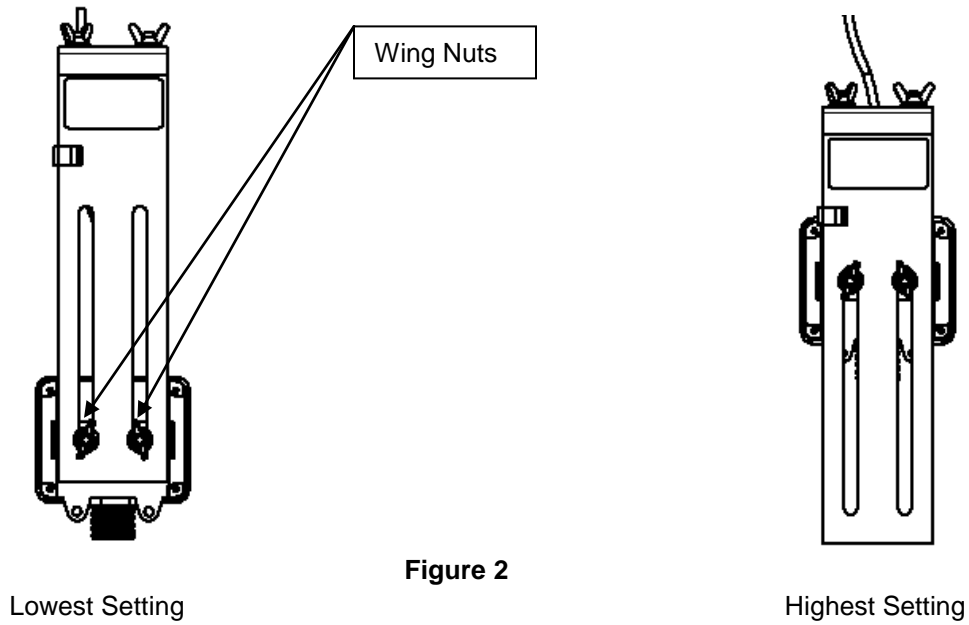


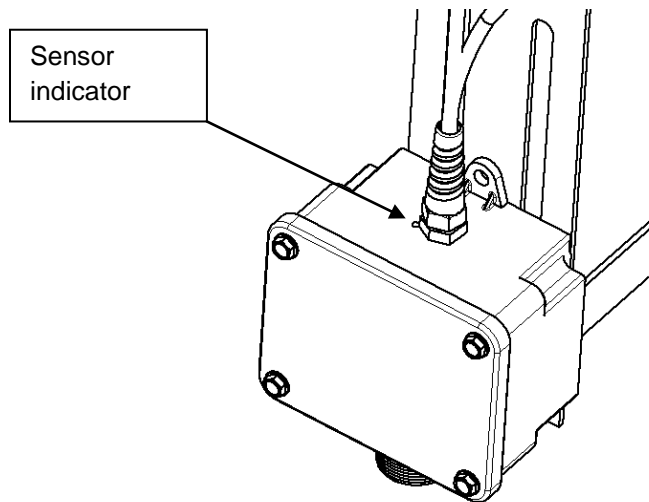
FIGURE 1

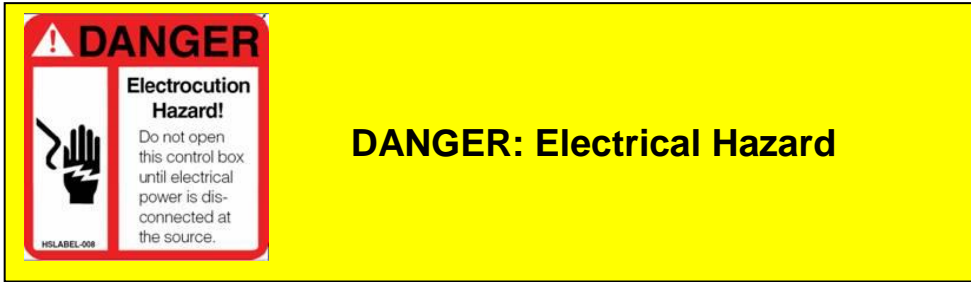
7. Feed height can be adjusted by loosening two wings nuts and sliding switch assembly up or down the adjustment bracket for desired feed level. Refer to Figure 2.



Operation:

The HS597-PROX sensor is factory set and should not require adjustment. Located near the cord exit is a small light pipe indicator. Light will illuminate whenever the sensor is detecting feed.





IMPORTANT Disconnect all electrical power before attempting installation of this (or any equipment), inspecting or servicing.

Ground all electrical equipment in accordance with applicable codes. Do not assume equipment will automatically be grounded due to incidental metal-to-metal contact.

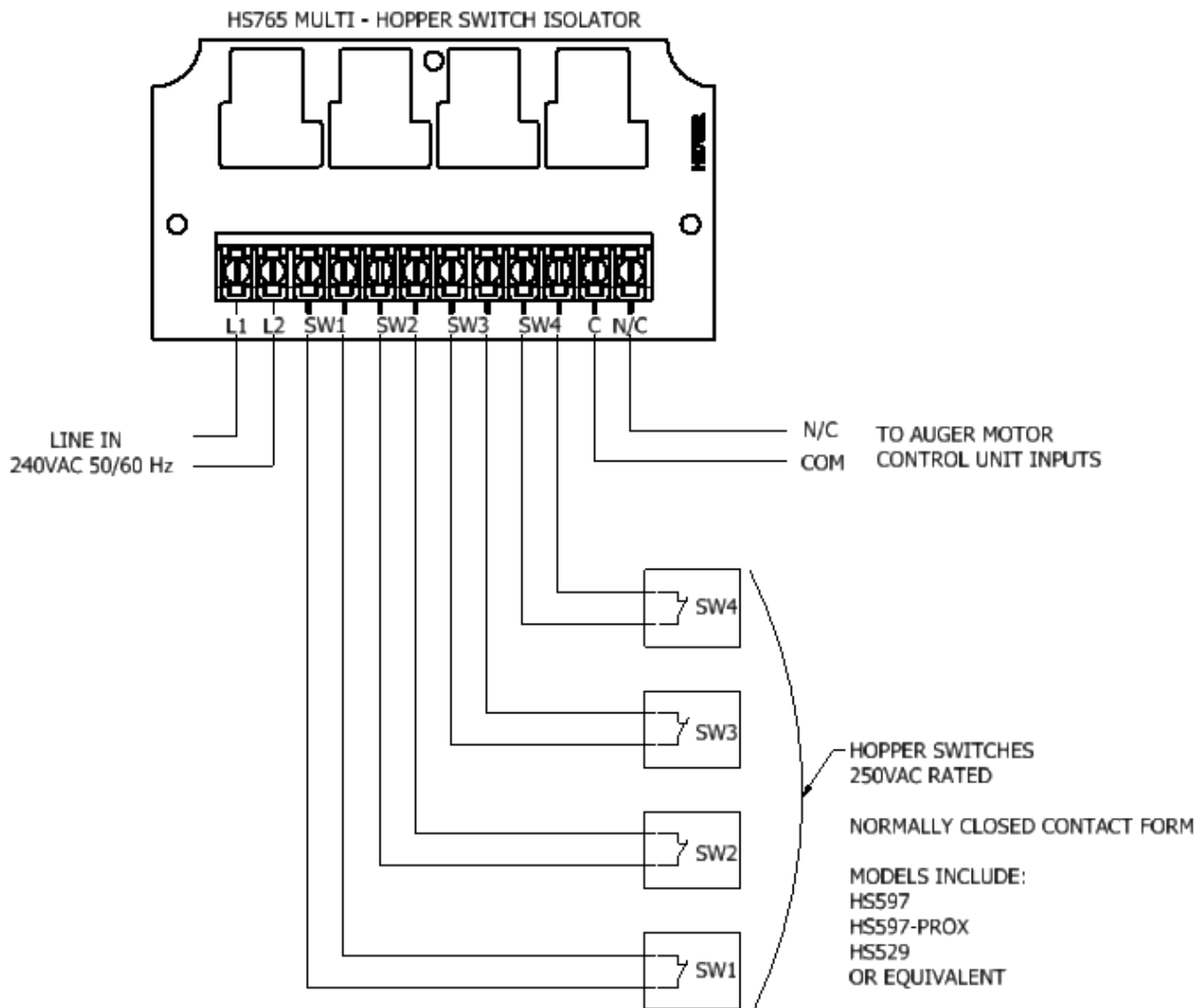
ALL electrical wiring must be done by a qualified electrician in accordance with local and national electric codes.

Wiring:

The HS597-PROX Hopper Level Switch Control utilizes a current robbing capacitive proximity sensor. It is designed to be used as a control signal for relay input only and cannot be connected to motor loads. It is specifically designed to work with Grower Select HS765 Multi-Hopper Switch Isolator where up to four HS597-PROX sensors can be connected to control auger motor loads. The sensor is Normally Closed output. When connected to a HS765, the auger motor will turn on until feed is present in front of the HS597-PROX sensor at which time the auger motor will turn off. The auger motor will turn back on as soon as feed has been removed from the face of the HS597-PROX sensor.

The HS597-PROX is rated for 200 mA @ 20-250VAC.

Connection to HS765 Multi-Hopper Switch Isolator:



Hog Slat Limited Warranty

Hog Slat warrants products to be free from defects in material or workmanship for a period of twenty-four (24) months from the date of **original purchase**. Hog Slat will credit, repair, or replace, at its option any product deemed defective within this time period. Labor costs associated with the replacement or repair of the product are not covered by the Seller/Manufacturer.

Conditions and Limitations

1. The product must be installed by and operated in accordance with the instructions published by the **Seller/Manufacturer or Warranty will be void.**
2. Warranty is void if **all components** are not original equipment supplied by the **Seller/Manufacturer.**
3. This product must be purchased from and installed by an authorized retailer/distributor or certified representative thereof or the Warranty will be void.
4. Malfunctions or failure resulting from misuse, abuse, negligence, alteration, accident, or lack of proper maintenance shall not be considered defects under the Warranty.
5. This Warranty applies only to components/systems for the care of poultry and livestock. Other applications in industry or commerce are not covered by this Warranty.
6. This Warranty applies only to the Original Purchaser of the product.

The **Seller/Manufacturer** shall not be liable for any **Consequential or Special Damage** which any purchaser may suffer or claim to suffer as a result of any defect in the product. **“Consequential” or “Special Damages”** as used herein include, but are not limited to, lost or damaged products or goods, costs of transportation, lost sales, lost orders, lost income, increased overhead, labor and incidental costs and operational inefficiencies.

THIS WARRANTY CONSTITUTES THE SELLER/MANUFACTURER'S ENTIRE AND SOLE WARRANTY AND THIS MANUFACTURER EXPRESSLY DISCLAIMS ANY AND ALL OTHER WARRANTIES, INCLUDING, BUT NOT LIMITED TO, EXPRESS AND IMPLIED WARRANTIES AS TO MERCHANTABILITY, FITNESS FOR PARTICULAR PURPOSES SOLD AND DESCRIPTION OR QUALITY OF THE PRODUCT FURNISHED HEREUNDER.

Hog Slat Retailers/Distributors are not authorized to modify or extend the terms and conditions of this Warranty in any manner or to offer or grant any other warranties for GrowerSelect products in addition to those terms expressly stated above. An officer of Hog Slat must authorize any exceptions to this Warranty in writing. The Seller/Manufacturer reserves the right to change models and specifications at any time without notice or obligation to improve previous models.

This equipment must be installed in accordance with all State and Local Codes and applicable Regulations which should be followed in all cases. Authorities having jurisdiction should be consulted before installations are made.



Hog Slat, Inc.
PO Box 300
Newton Grove, NC 28366

Phone: (910) 594-0219

Fax: (910) 594-1392

www.hogslat.com

Copyright © 2017 by Hog Slat, Inc.

Part Number: HSMANUAL-147 Rev IR

Market: Poultry