

# GrowerSELECT® HS598 DELAY RELAY KIT

## General Installation Notes:

Make sure that power is disconnected from system prior to servicing.

Installation of this equipment and related OEM equipment should be in accordance with these instructions, OEM's installation instructions and local codes (if applicable). Failure to follow specified instructions may cause damage to equipment and/or personal injury or death.

Take special note of any Warnings or Safety Decals on the equipment and in manuals.

Always wear protective clothing and any applicable Personal Protective Equipment (Safety Glasses and/or Ear Plugs) when working with the equipment.

Discarded materials, equipment and boxes should be recycled in accordance with local and national codes.

Unless otherwise specified, all Feed Delivery Systems (Diameters) are installed similarly.

**Note: Delay Relay Kit is to be wired in accordance with all local, state and national wiring codes. All wiring sizes and fuse capacities are to be sized according to national electrical code specifications or other applicable regulations.**

## Safety Instructions:

Read all safety messages in this manual and on equipment safety decals. Follow recommended precautions and safe operating practices.

Ground all electrical equipment for safety.

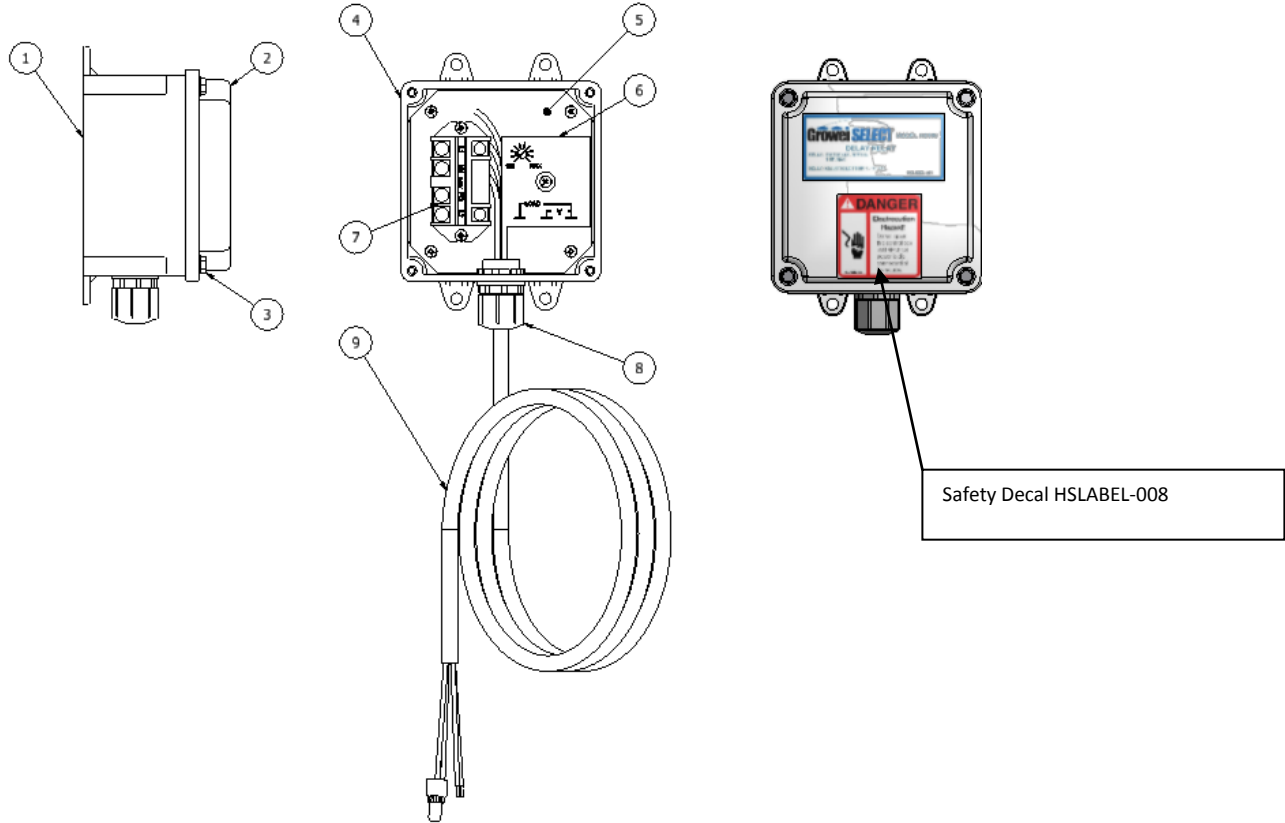
Ground all non-current carrying metal parts to guard against electrical shock.

Always keep safety decals in good condition and replace missing or damaged decals.

## Overview:

The Delay Relay Kit is designed to provide a "Start up delay" to prevent the fill system auger drive motor from short cycling. Short cycling of the auger drive motor can result in premature failure. The Delay Relay Kit connects between the Control Unit and the Auger Motor. Once the signal from the Control Unit switches from "Motor OFF" to "Motor ON", the delay timer starts counting down from the set time delay. At the end of the time delay, Auger Motor operation resumes.

**HS598 DELAY TIMER KIT ASSEMBLY**

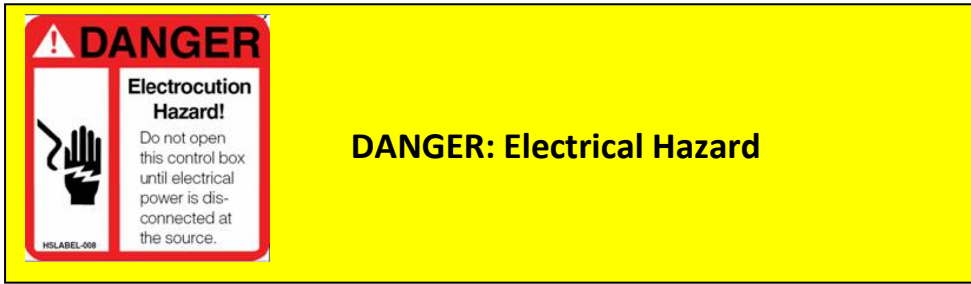


REF #	PART #	DESCRIPTION
1	HS599-1	ENCLOSURE ,PLASTIC
2	HS599-2	COVER, PLASTIC
3	60932	Screw 10-24 X 3/4"
4	HS599-3	GASKET
5	HS599-5	COMPONENT MOUNT
6	EL1088	TIME DELAY 1-100 sec,
7	EL1008	RELAY, 240VAC COIL, DPST 25 AMP
8	61646	LIQUID TIGHT CONNECTOR NYLON 1/2"
9	HSPT-003	16/4 CORD ASSEMBLY

**Installation:**

1. Delay Relay Kit should be installed in a convenient location near the feed system “Power Drive Control Unit” or other equipment being connected.
2. Initial delay set-point should be set to approximately 15 seconds.
3. Further adjustment to the delay time may be necessary depending upon fill system set-up.

**Wiring:**



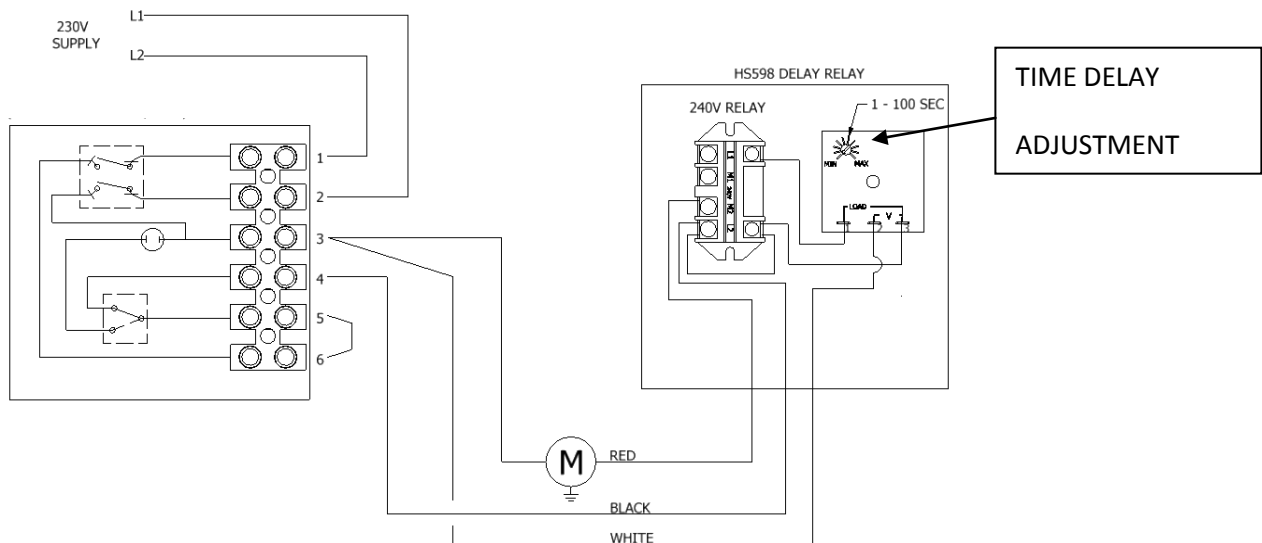
**IMPORTANT** Disconnect all electrical power before attempting installation of this (or any equipment), inspecting or servicing.

Ground all electrical equipment in accordance with applicable codes. Do not assume equipment will automatically be grounded due to incidental metal-to-metal contact.

**ALL** electrical wiring must be done by a qualified electrician in accordance with local and national electric codes.

**Maximum Ratings:**

1 1/2 HP @ 230VAC, 50/60 Hz.



**Wiring for use with GrowerSELECT HS593 Control unit or CTB 6500 Control Unit**

**This equipment must be installed in accordance with all State and Local Codes and applicable Regulations which should be followed in all cases. Authorities having jurisdiction should be consulted before installations are made.**



**Hog Slat, Inc.  
PO Box 300  
Newton Grove, NC 28366**

**Phone: (910) 594-0219**

**Fax: (910) 594-1392**

**[www.hogslat.com](http://www.hogslat.com)**

**Copyright © 2014 by Hog Slat, Inc.**

Part Number: HSMANUAL-012 Rev A4  
HSART-148  
Market – Hog & Poultry