

Installation Instructions for GrowerSelect 1/2 HP 850 RPM Direct Drive Fan Replacement Motor HS9005 & HS9005A

Installation Notes:

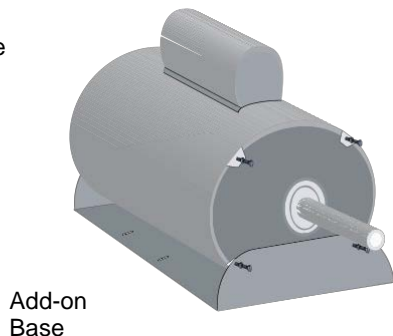
The HS9005 is a universal replacement motor for any direct drive fan application requiring a 1/2 HP 850 RPM motor with a 220 Volt AMP rating of 3.3 or less. The motor shaft has both a flat and keyway to accept either prop mounting configuration. This motor can be mounted either by the ridged base or four (4) 10-32 mounting studs. This motor is designed to adapt to several mounting schemes.

Note: Replacement motor is to be wired in accordance with all local, state, and national wiring codes. All wiring sizes and fuse capabilities are to be sized according to national electrical code specifications or other applicable regulations.

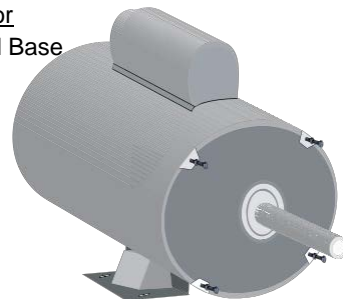
Installation Method 1:

Replacement of an Existing motor with "Add-On Base." This application is a direct replacement. (Older Aerotech Applications)

Existing Motor
with Add-on Base



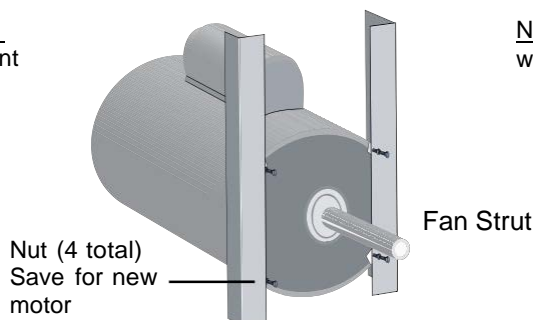
New Motor
with Rigid Base



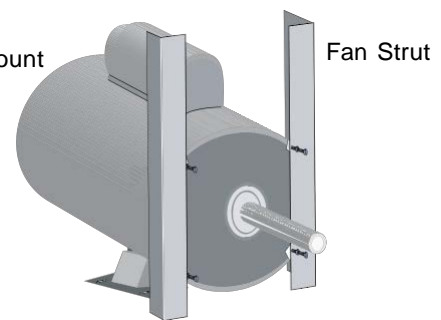
Installation Method 2:

Replacement of an Existing motor mounted using the four (4) mounting studs on face of motor. In this application the Ridged Base does not interfere with Fan Struts (Newer Aerotech and GSI Applications)

Existing Motor
with Stud Mount



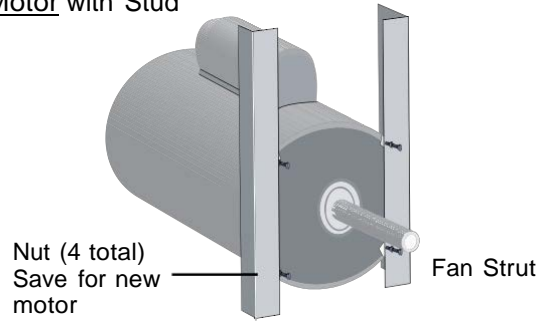
New Motor
with Stud Mount



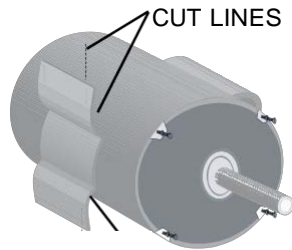
Installation Method 3:

Replacement of an Existing motor mounted using the four (4) mounting studs on face of motor. In this application, the Ridged Base interferes with Fan Struts and New Motor base must be altered. (Some Aerotech applications)

Existing Motor with Stud Mount



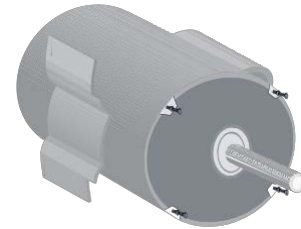
New Motor
Modify motor as shown below



CUT LINES

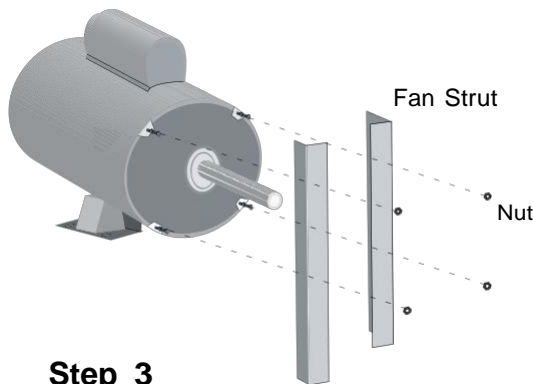
Step 1

Use tin snips or hack saw to remove front corner of rigid base



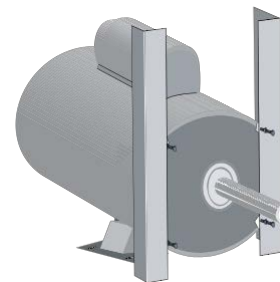
Step 2

After making cuts motor should look like this



Step 3

Motor can now be mounted in fan. Rigid base should clear fan struts.



Step 4

Tighten nuts securely

Installation is Complete

HSART-007 Rev A1
Market: Hog & Poultry