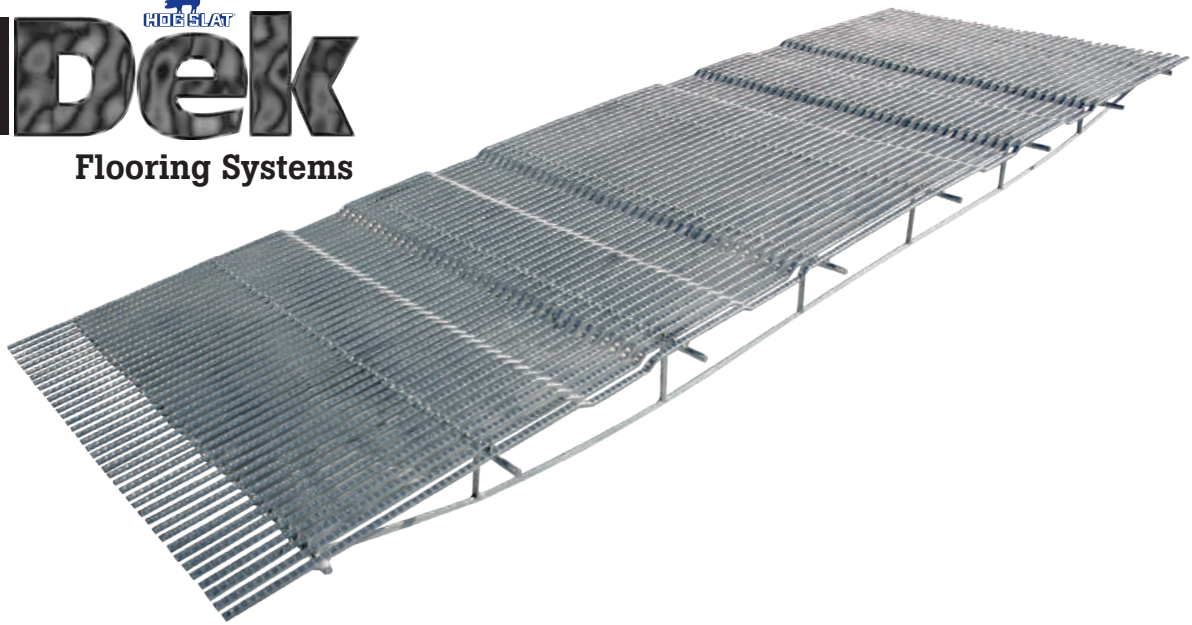




TriDEK

Hog Slat is the only Hog equipment manufacturer to offer resistance welded TriDEK floors.

TRIDEK Flooring Systems



Introducing a galvanized triangular bar (TriDEK) flooring system that is used in nursery and farrowing applications. TriDEK floors are made from rolled steel rod which has a tensile strength of 80,000 psi and hardness of 95 Rb. The rolled TriDEK rods are then resistance welded to a 13/32" diameter cross rod.

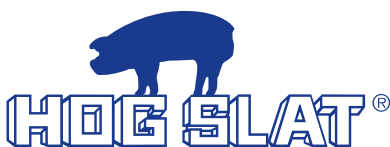
The advantages of resistance welding versus MIG welding are:

- Weld consistency
- Weld strength
- Floor cleanliness

Resistance welded TriDEK floors have an average weld strength of 7500+ lbs where traditional MIG welded floors average 5500 lbs. The TriDEK flooring system is the cleanest flooring system on the market today. TriDEK floors can be manufactured up to 2.5' wide and up to 14' long.

TriDEK floors are Hot Dipped galvanized to ASTM A123/A. Hot Dipped Galvanizing provides steel with long lasting protection against corrosion. Some of the possible options for the TriDEK flooring include, smooth or dimpled surface (No-Slip) to provide your preferred level of traction and a standard flat deck or optional traction breaks.

All together, the new TriDEK flooring system provides the best value on the market!



Self-Supported

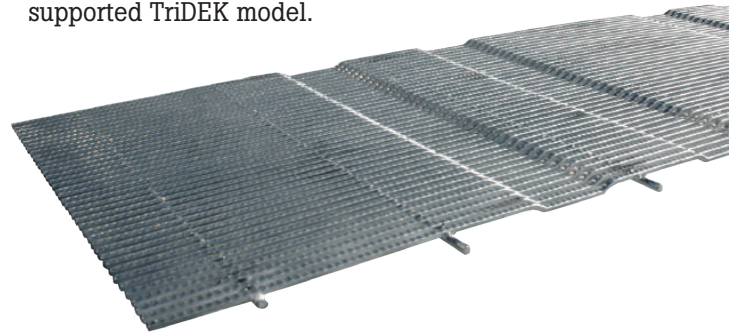
Self-Supported TriDEK floors have a truss system that eliminates the need for floor frames or other support methods. TriDEK self-supported floors can be used to span up to 12' without additional support. The standard 30" wide floor has 4 truss supports, but custom floor widths and truss supports are available.



Non-Supported

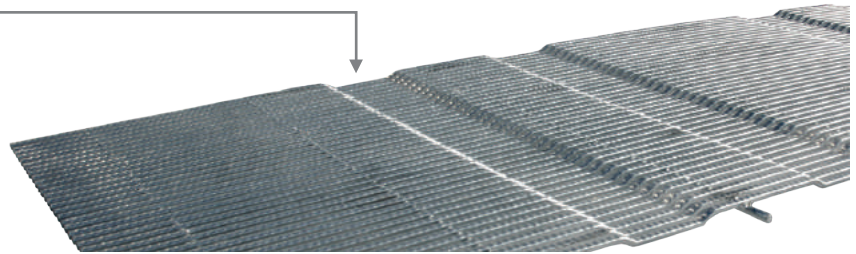
Non-Supported TriDEK flooring does not have a truss system in place to support the flooring structure.

Non-Supported TriDEK requires support beams or frames. Same options are available as the self supported TriDEK model.



Traction Breaks

5" wide x 3/8" deep indentions in the flooring help support the sow during standing and sitting. Traction breaks reduce slippage and possible injury to the sow. TriDEK may be ordered with or without traction breaks installed. *Traction Breaks are not used in nursery applications.

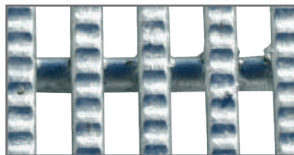


No-Slip Grip Indentions

.5"x .025" indentions spaced every 5/16" on the TriDEK flooring provide additional traction to support sow footing.

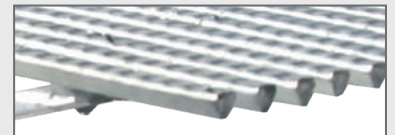
No-Slip is primarily used in farrowing rooms.

No-Slip is optional.



Specifications

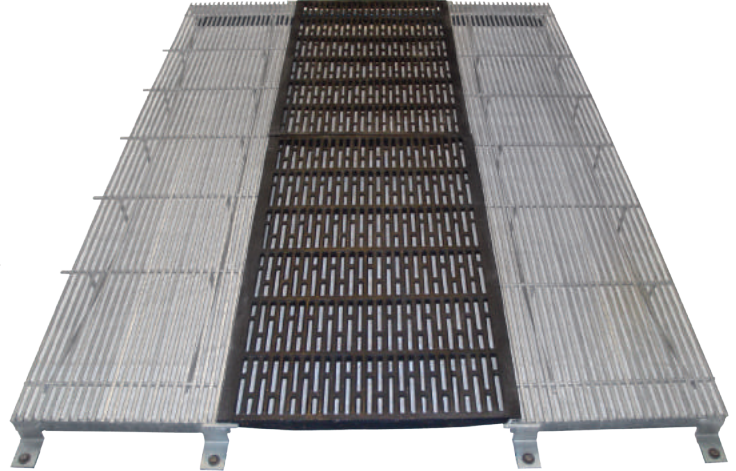
- Triangular Dimensions: 1/3" x 1/3" x 1/3"
- Opening Spacing: 3/8"
- Finish: Hot dipped galvanized (ASTM A123/A)



Cast and TRIDEK Combo

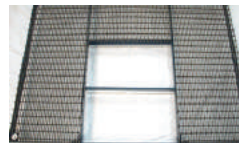
This unique combo offers producers a distinctive option. Self supporting galvanized TRIDEK creep sections lock the two-piece cast into a stable farrowing platform. The two-piece cast center section eliminates multiple joints.

- #3211920201 18-3/8" x 84" TRIDEK creep section
- #HBD24X42..... 24" x 42" Flat cast- black
- #HBD24X48..... 24" x 48" Flat cast - black



TRIDEK Floor Patch

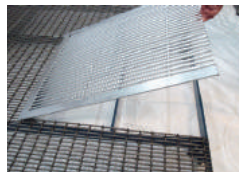
- #3300010200TRIDEK patch 26" x 28-1/2"
- #3310570200TRIDEK patch 24-5/16" x 24"
- #3310580200TRIDEK patch 24-5/16" x 36"
- #3310000200 TRIDEK patch 30" x 39-3/4"



1. Cut out the section of damaged wire along floor frame supports



2. Insert TRIDEK patch in floor catching the Z Hooks under the support in the front of the cut out



3. Pressing the TRIDEK patch down locks the Z Hooks on the support without additional fasteners



4. Crate anchors hold the TRIDEK patch in place

Custom sizes are available to match your floor!

- The TRIDEK Patch allows a producer to cut out the worn wire flooring, then replace it by dropping the TRIDEK Patch in.
- Dropping in the TRIDEK Patch is easier installation than other patches. TRIDEK also stays cleaner than wire or cast.

TRIDEK Floor Patch (24-5/16" x 84")

- For replacing the entire center of the floor

- #318081020024-5/16" x 84"

